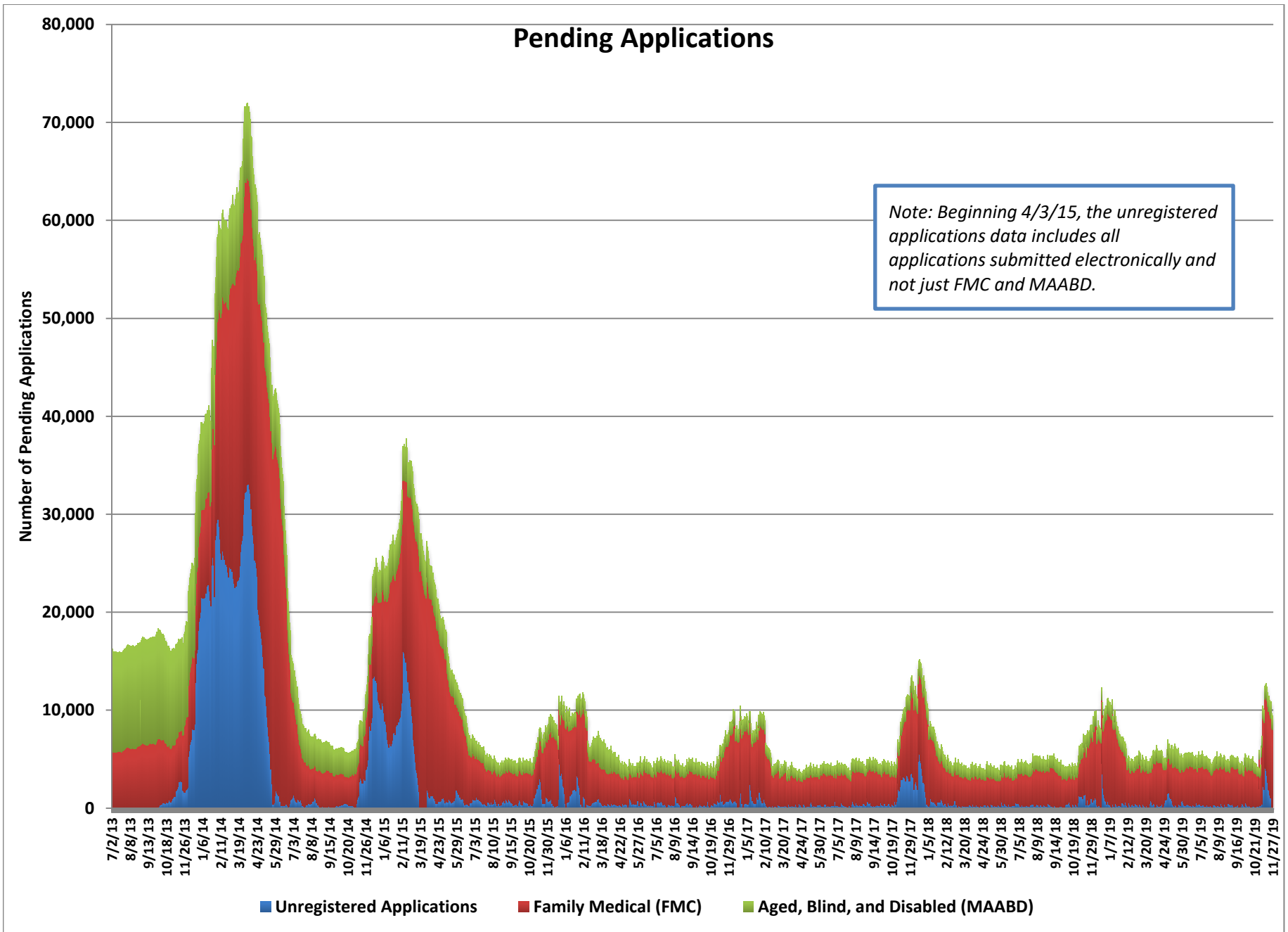


Medicaid Chart Pack

December 2019

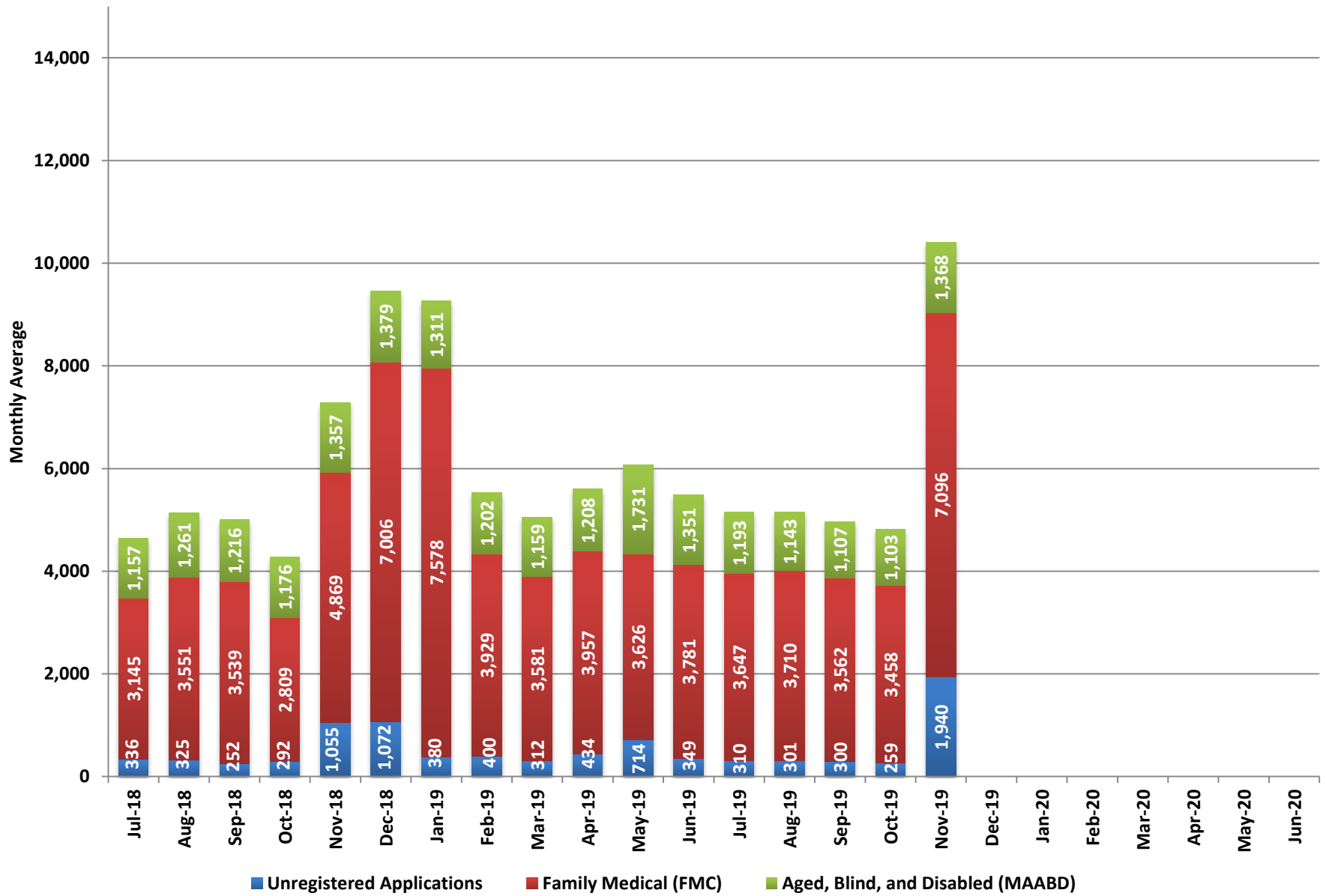


Pending Applications

Date	Unregistered Applications	Family Medical (FMC)			Aged, Blind, and Disabled (MAABD)				Total Medicaid Pending Applications
		Pending <= 45 Days	Pending > 45 Days	Total Applications	Pending <= 45 Days	Pending 46-90 Days	Pending > 90 Days	Total Applications	
11/1/19	1,933	3,116	7	3,123	932	92	41	1,065	6,121
11/4/19	247	4,675	7	4,682	1,002	93	40	1,135	6,064
11/5/19	217	5,768	9	5,777	1,061	91	39	1,191	7,185
11/6/19	529	6,884	6	6,890	1,147	84	41	1,272	8,691
11/7/19	413	6,700	6	6,706	1,161	82	39	1,282	8,401
11/8/19	2,276	6,804	6	6,810	1,200	85	38	1,323	10,409
11/12/19	2,198	6,941	8	6,949	1,209	106	39	1,354	10,501
11/13/19	1,908	7,127	6	7,133	1,257	99	42	1,398	10,439
+11/14/19	4,120	7,408	6	7,414	1,306	96	42	1,444	12,978
+11/15/19	4,063	7,625	9	7,634	1,300	103	43	1,446	13,143
+11/18/19	3,864	7,739	13	7,752	1,307	116	43	1,466	13,082
+11/19/19	3,310	7,928	14	7,942	1,297	117	45	1,459	12,711
+11/20/19	2,616	8,136	13	8,149	1,326	107	47	1,480	12,245
11/21/19	1,903	8,172	16	8,188	1,339	101	45	1,485	11,576
11/22/19	1,828	8,154	13	8,167	1,327	91	45	1,463	11,458
11/25/19	1,350	8,245	15	8,260	1,333	102	43	1,478	11,088
11/26/19	1,004	8,140	14	8,154	1,310	111	41	1,462	10,620
11/27/19	1,149	7,991	10	8,001	1,287	103	39	1,429	10,579

+ THIS ELEVATED TOTAL IS DUE TO OPEN ENROLLMENT AS WELL AS A NUMBER OF CASES RECEIVED FROM THE SILVER STATE INSURANCE EXCHANGE AS PART OF THE TRANSITION FROM THE FEDERAL MARKETPLACE I.E. ABOUT 8,000 CASES

Pending Applications (Monthly Average)



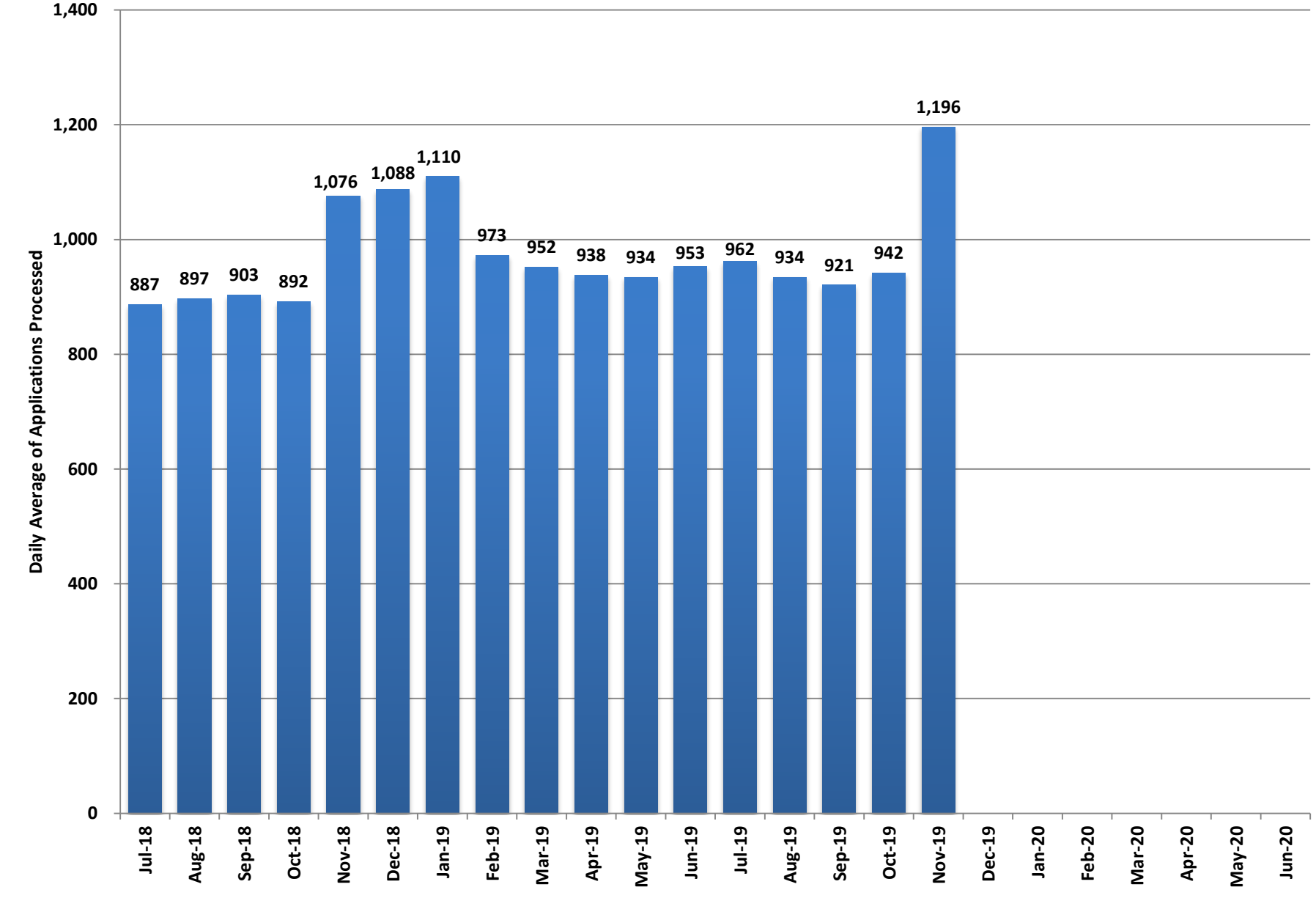
**Pending Applications
(Monthly Averages)**

Month	Unregistered Applications	Family Medical (FMC)			Aged, Blind, and Disabled (MAABD)				Total Medicaid Pending Applications
		Pending <= 45 Days	Pending > 45 Days	Total Applications	Pending <= 45 Days	Pending 46-90 Days	Pending > 90 Days	Total Applications	
Jul-18	336	3,116	29	3,145	987	112	58	1,157	4,639
Aug-18	325	3,521	30	3,551	1,097	110	55	1,261	5,137
Sep-18	252	3,505	34	3,539	1,029	127	60	1,216	5,008
Oct-18	292	2,776	33	2,809	990	124	62	1,176	4,276
Nov-18	1,055	4,834	35	4,869	1,164	124	69	1,357	7,281
Dec-18	1,072	6,962	44	7,006	1,198	102	80	1,379	9,457
Jan-19	380	7,507	71	7,578	1,125	118	68	1,311	9,269
Feb-19	400	3,856	73	3,929	1,024	113	65	1,202	5,532
Mar-19	312	3,561	20	3,581	997	106	57	1,159	5,053
Apr-19	434	3,934	23	3,957	1,058	95	55	1,208	5,599
May-19	714	3,607	20	3,626	1,559	113	60	1,731	6,072
Jun-19	349	3,767	13	3,781	1,143	146	62	1,351	5,481
Jul-19	310	3,631	16	3,647	1,000	129	65	1,193	5,150
Aug-19	301	3,695	14	3,710	971	120	51	1,143	5,154
Sep-19	300	3,551	11	3,562	947	105	55	1,107	4,969
Oct-19	259	3,448	10	3,458	955	104	44	1,103	4,819
Nov-19	1,940	7,086	10	7,096	1,228	99	42	1,368	10,405
Dec-19									
Jan-20									
Feb-20									
Mar-20									
Apr-20									
May-20									
Jun-20									

Fiscal Year Averages

Fiscal Year	Unregistered Applications	Family Medical (FMC)			Aged, Blind, and Disabled (MAABD)				Total Medicaid Pending Applications
		Pending <= 45 Days	Pending > 45 Days	Total Applications	Pending <= 45 Days	Pending 46-90 Days	Pending > 90 Days	Total Applications	
SFY15	3,376	6,810	3,357	10,167	1,369	498	1,129	2,997	16,405
SFY16	797	4,150	28	4,178	974	162	271	1,407	6,382
SFY17	486	3,961	27	3,988	938	84	56	1,079	5,552
SFY18	835	3,909	47	3,956	1,030	91	50	1,172	5,963
SFY19	493	4,246	35	4,281	1,114	116	62	1,292	6,067
SFY20 YTD	622	4,282	12	4,295	1,020	111	51	1,183	6,099

Medicaid Applications Processed per Working Day

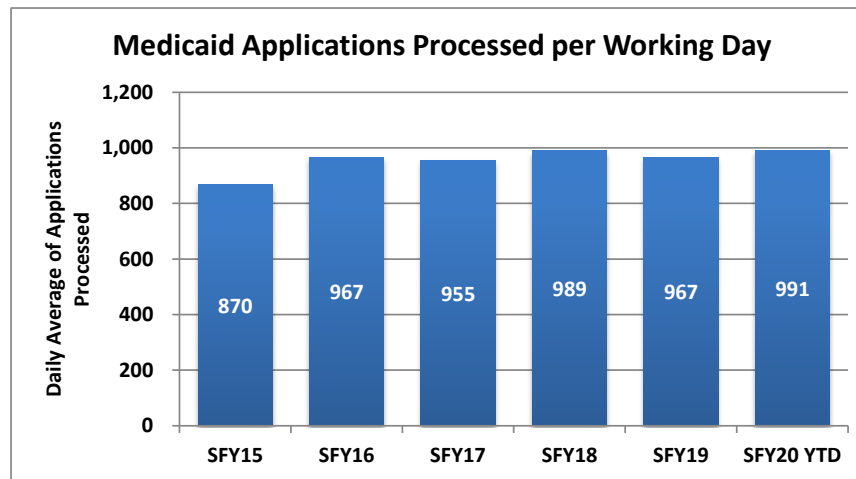


Pending Applications Processed Per Day

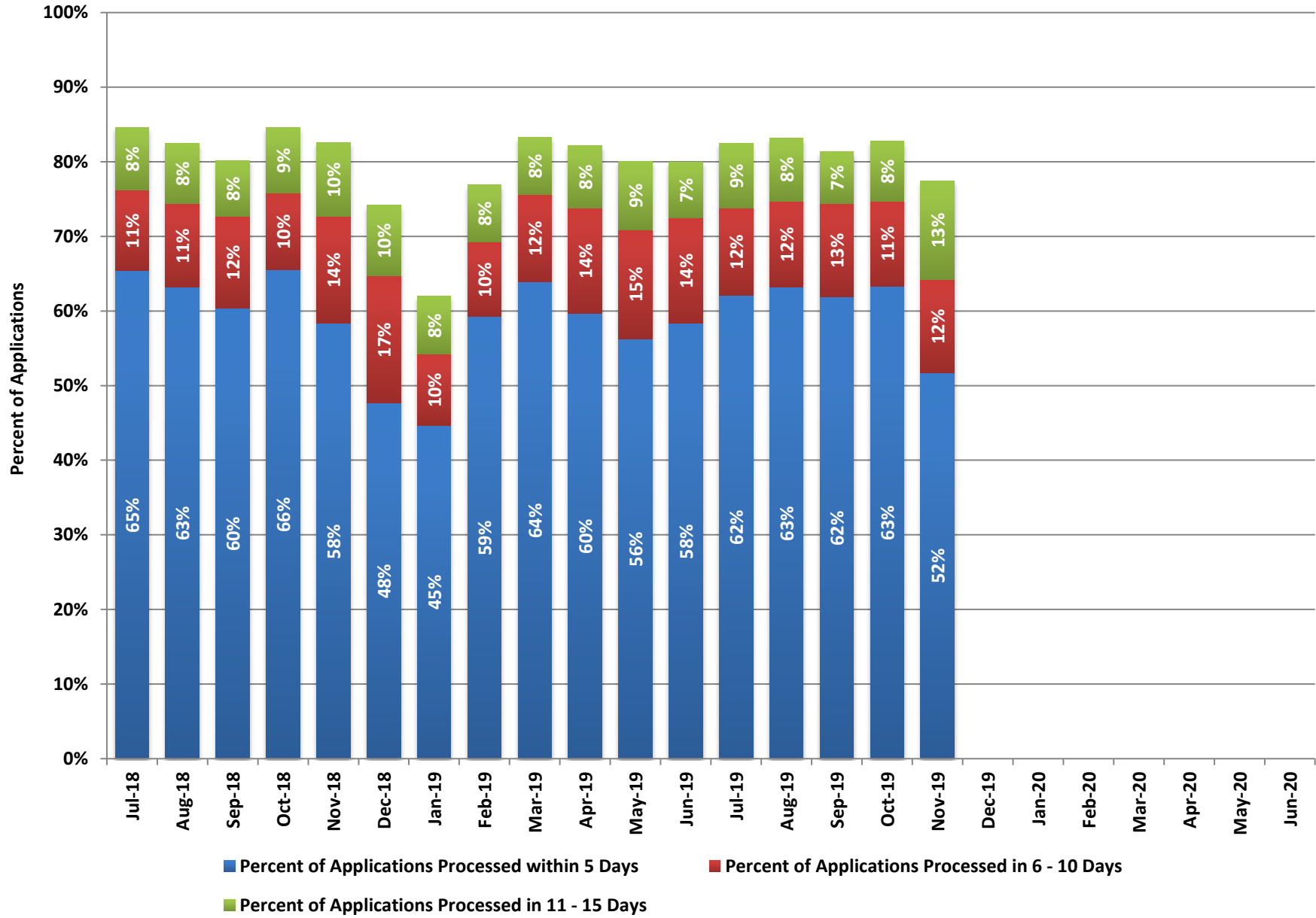
Month	Medicaid Applications Processed per Working Day
Jul-18	887
Aug-18	897
Sep-18	903
Oct-18	892
Nov-18	1,076
Dec-18	1,088
Jan-19	1,110
Feb-19	973
Mar-19	952
Apr-19	938
May-19	934
Jun-19	953
Jul-19	962
Aug-19	934
Sep-19	921
Oct-19	942
Nov-19	1,196
Dec-19	
Jan-20	
Feb-20	
Mar-20	
Apr-20	
May-20	
Jun-20	

Fiscal Year Averages

Fiscal Year	Medicaid Applications Processed per Working Day
SFY15	870
SFY16	967
SFY17	955
SFY18	989
SFY19	967
SFY20 YTD	991



Applications Processed within 15 Days



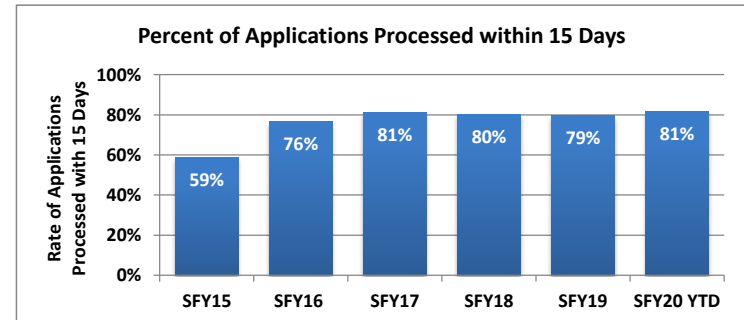
Applications Processed Within 15 Days

Month	Applications Processed within 5 Days	Percent of Applications Processed within 5 Days	Applications Processed in 6 - 10 Days	Percent of Applications Processed in 6 - 10 Days	Applications Processed in 11 - 15 Days	Percent of Applications Processed in 11 - 15 Days	Applications Processed within 15 Days	Total Applications Processed	Percent of Applications Processed within 15 Days
Jul-18	12,174	65%	2,019	11%	1,558	8%	15,751	18,619	85%
Aug-18	13,040	63%	2,303	11%	1,667	8%	17,010	20,634	82%
Sep-18	10,360	60%	2,115	12%	1,284	8%	13,759	17,158	80%
Oct-18	12,842	66%	2,030	10%	1,731	9%	16,603	19,615	85%
Nov-18	11,928	58%	2,932	14%	2,023	10%	16,883	20,445	83%
Dec-18	10,370	48%	3,691	17%	2,078	10%	16,139	21,742	74%
Jan-19	10,412	45%	2,219	10%	1,801	8%	14,432	23,296	62%
Feb-19	10,948	59%	1,850	10%	1,419	8%	14,217	18,480	77%
Mar-19	12,767	64%	2,337	12%	1,529	8%	16,633	19,979	83%
Apr-19	12,319	60%	2,914	14%	1,735	8%	16,968	20,629	82%
May-19	11,575	56%	2,994	15%	1,888	9%	16,457	20,551	80%
Jun-19	11,110	58%	2,699	14%	1,428	7%	15,237	19,049	80%
Jul-19	13,145	62%	2,467	12%	1,822	9%	17,434	21,152	82%
Aug-19	12,986	63%	2,381	12%	1,737	8%	17,104	20,557	83%
Sep-19	11,393	62%	2,310	13%	1,274	7%	14,977	18,413	81%
Oct-19	13,120	63%	2,365	11%	1,659	8%	17,144	20,715	83%
Nov-19	11,164	52%	2,696	12%	2,857	13%	16,717	21,583	77%
Dec-19									
Jan-20									
Feb-20									
Mar-20									
Apr-20									
May-20									
Jun-20									

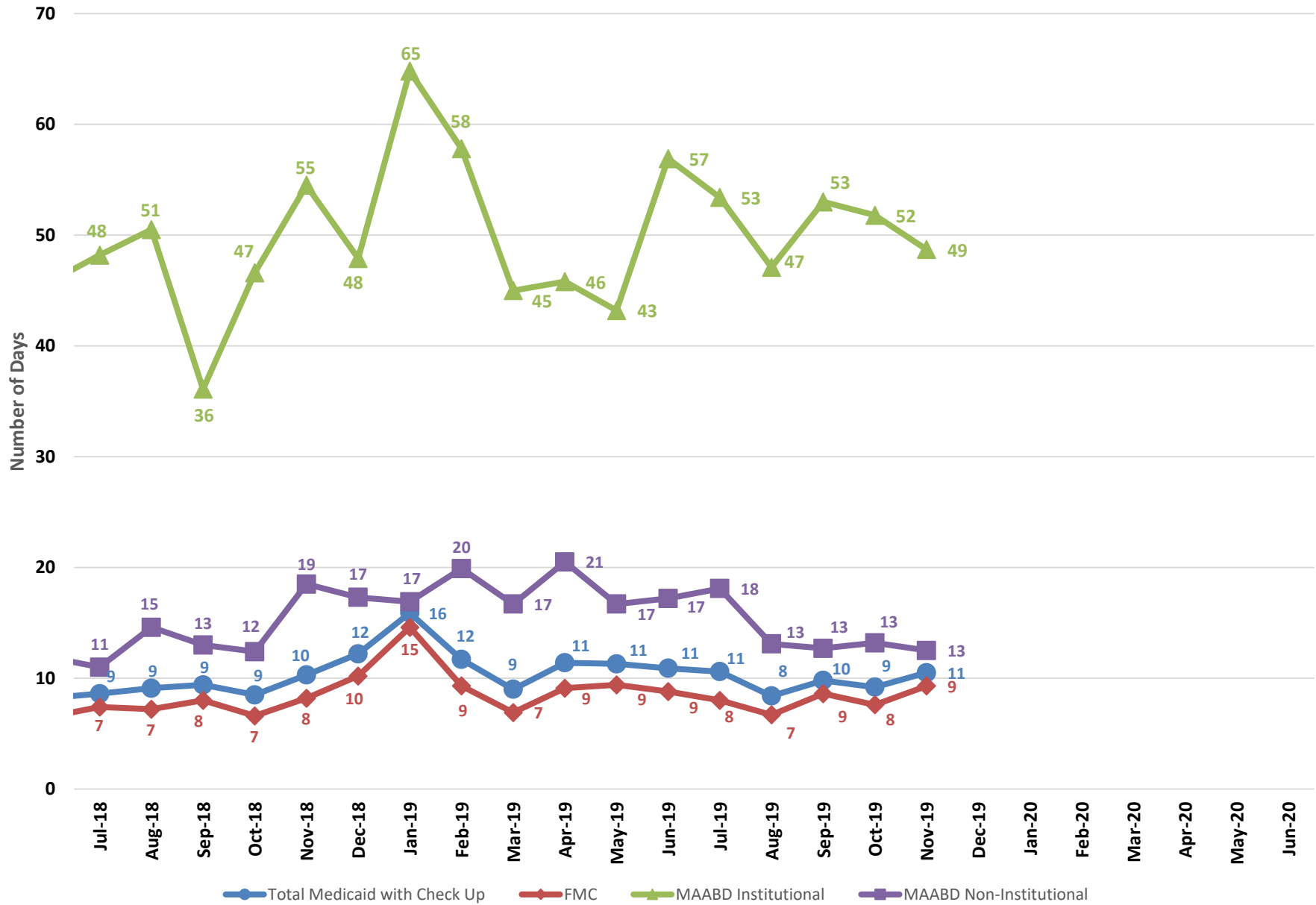
Note: This data reflects Family Medical (FMC), Newly Eligible Adults, Aged, Blind and Disabled (MAABD), and Nevada Check Up applications.

Percent of Applications Processed within 15 Days - Fiscal Year Averages

Fiscal Year	% within 15 Days
SFY15	59%
SFY16	76%
SFY17	81%
SFY18	80%
SFY19	79%
SFY20 YTD	81%



Average Processing Time (Days)

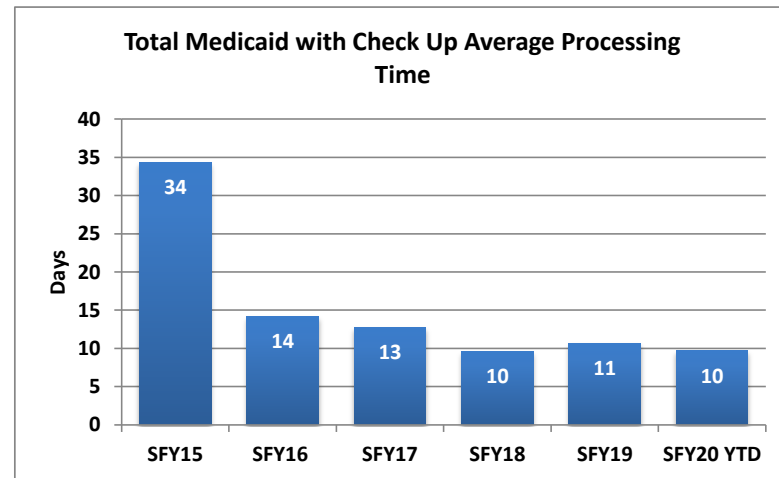


Average Processing Times (Days)

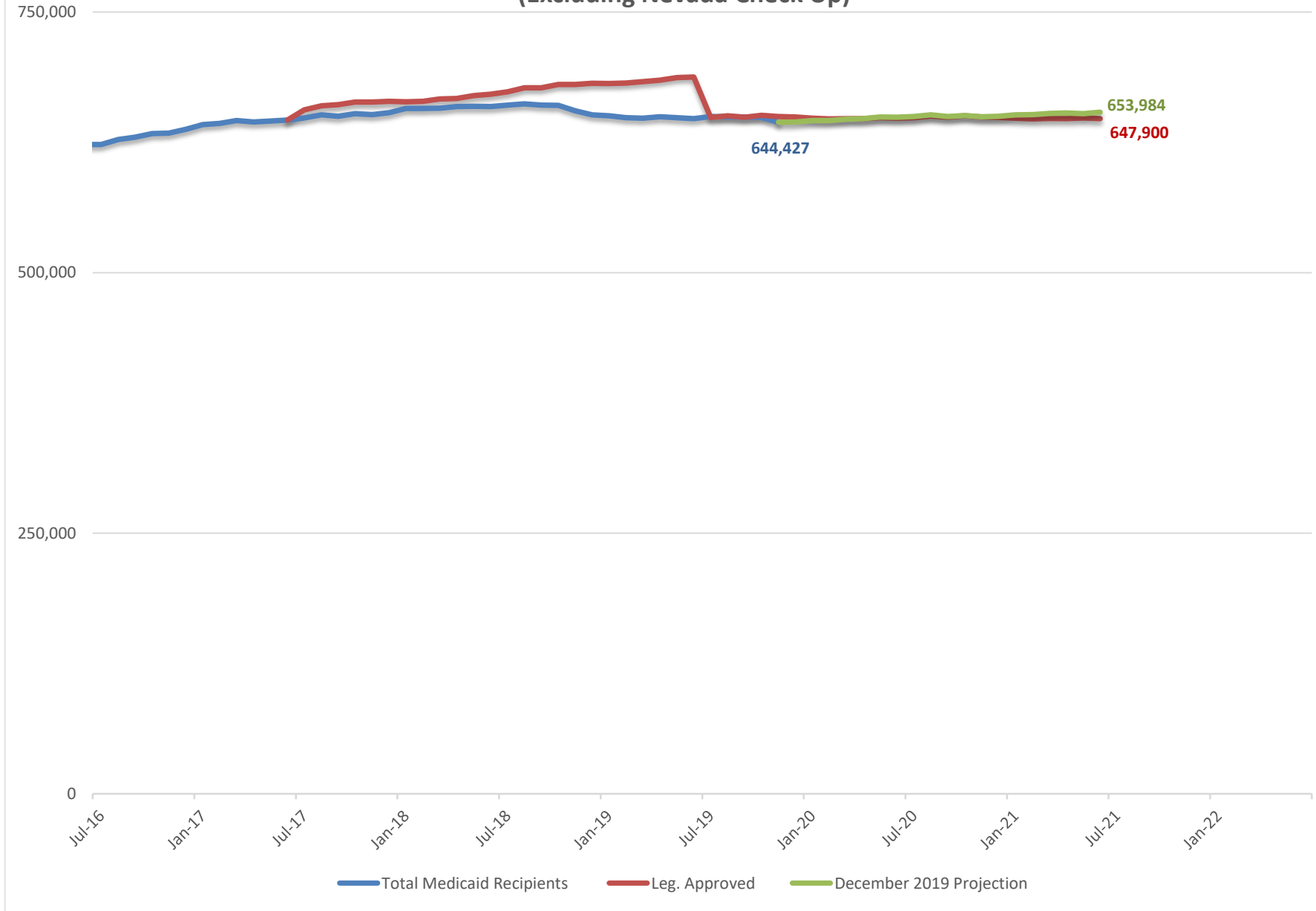
Month	Total Medicaid with Check Up	FMC	MAABD Institutional	MAABD Non-Institutional
Jul-18	9	7	48	11
Aug-18	9	7	51	15
Sep-18	9	8	36	13
Oct-18	9	7	47	12
Nov-18	10	8	55	19
Dec-18	12	10	48	17
Jan-19	16	15	65	17
Feb-19	12	9	58	20
Mar-19	9	7	45	17
Apr-19	11	9	46	21
May-19	11	9	43	17
Jun-19	11	9	57	17
Jul-19	11	8	53	18
Aug-19	8	7	47	13
Sep-19	10	9	53	13
Oct-19	9	8	52	13
Nov-19	11	9	49	13
Dec-19				
Jan-20				
Feb-20				
Mar-20				
Apr-20				
May-20				
Jun-20				

Fiscal Year Averages

Fiscal Year	Total Medicaid with Check Up	FMC	MAABD Institutional	MAABD Non-Institutional
SFY15	34	22	69	45
SFY16	14	10	63	30
SFY17	13	12	51	14
SFY18	10	8	44	13
SFY19	11	9	50	16
SFY20 YTD	10	8	51	14



Total Medicaid Recipients (Excluding Nevada Check Up)



**Total Medicaid Recipients
(Excluding Nevada Check Up)**

FY17 & FY18 Biennium

Month	Total Medicaid Recipients
Jul-16	623,002
Aug-16	627,802
Sep-16	629,956
Oct-16	633,535
Nov-16	634,037
Dec-16	608,812
Jan-17	614,216
Feb-17	620,541
Mar-17	623,109
Apr-17	621,250
May-17	622,259
Jun-17	622,986
Jul-17	648,513
Aug-17	651,526
Sep-17	650,002
Oct-17	652,613
Nov-17	651,756
Dec-17	653,456
Jan-18	657,620
Feb-18	657,515
Mar-18	657,751
Apr-18	659,505
May-18	659,677
Jun-18	659,387

FY19 & FY20 Biennium

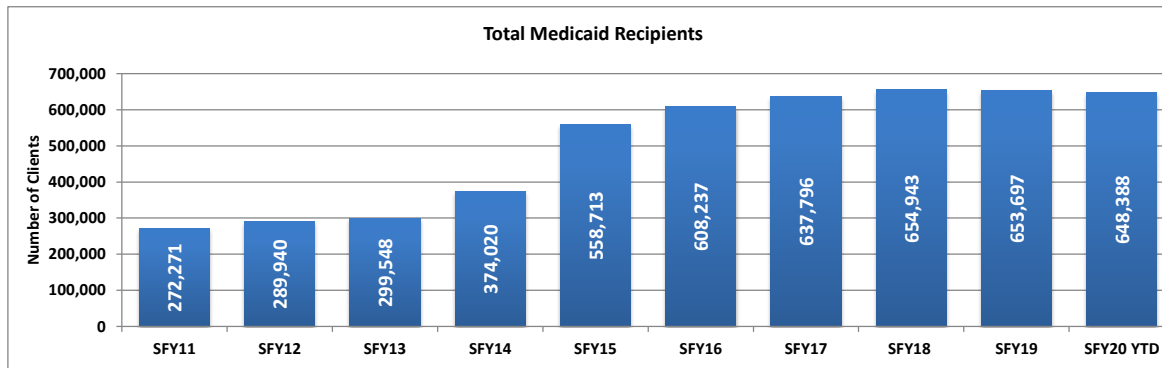
Month	Total Medicaid Recipients	Leg. Approved	December 2019 Projection
Jul-18	660,791	673,606	
Aug-18	661,988	677,370	
Sep-18	660,881	677,385	
Oct-18	660,477	680,535	
Nov-18	655,369	680,603	
Dec-18	651,512	681,627	
Jan-19	650,494	681,422	
Feb-19	648,640	681,965	
Mar-19	648,272	683,378	
Apr-19	649,630	684,779	
May-19	648,627	687,226	
Jun-19	647,680	687,731	
Jul-19	649,791	649,001	
Aug-19	649,574	650,460	
Sep-19	649,328	649,139	
Oct-19	648,820	650,904	
Nov-19	644,427	649,848	644,427
Dec-19		649,352	644,625
Jan-20		648,310	645,899
Feb-20		647,482	646,059
Mar-20		647,860	647,374
Apr-20		647,758	647,834
May-20		648,643	649,334
Jun-20		648,137	649,173

FY21 & FY22 Biennium

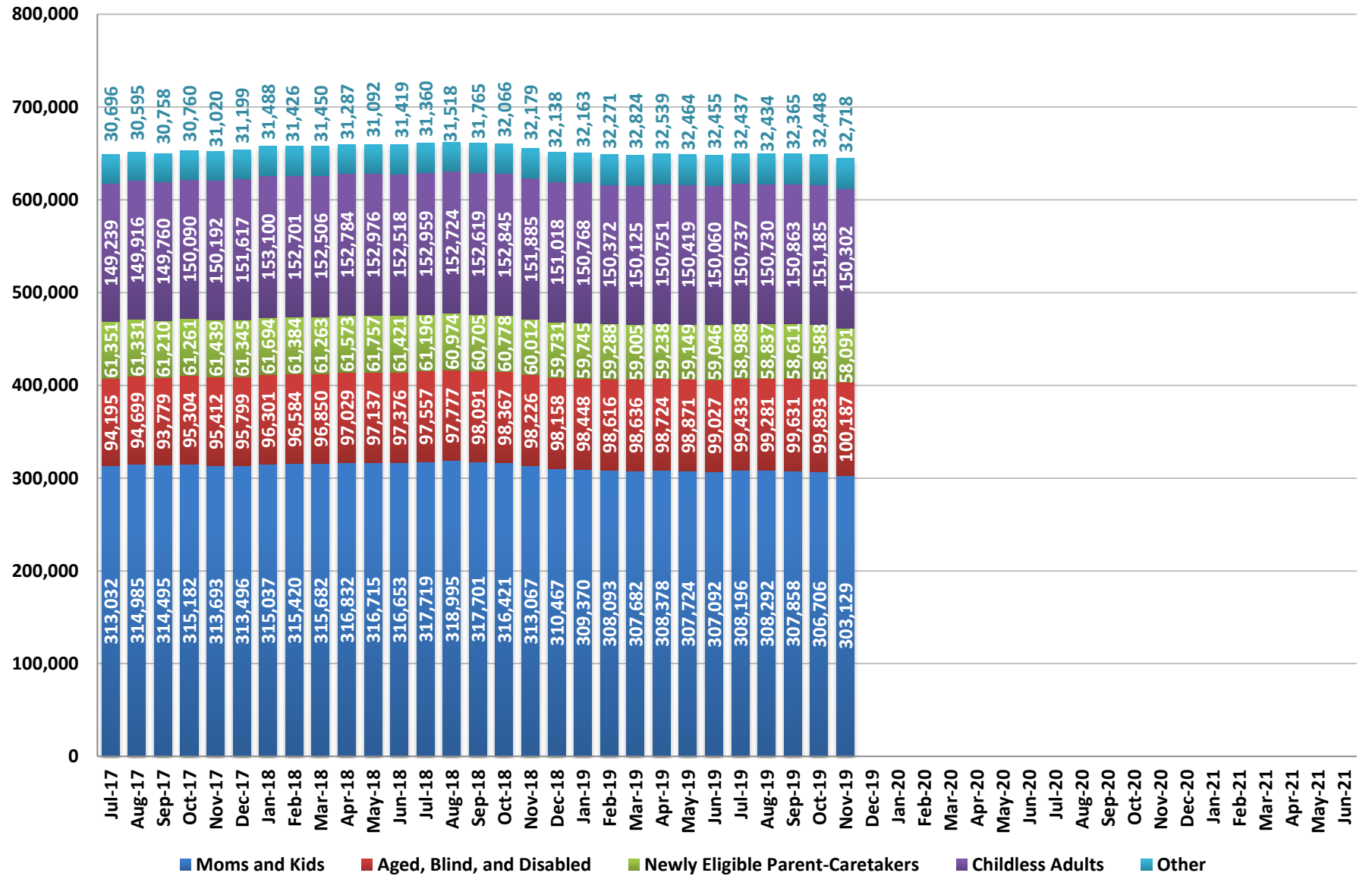
Month	Leg. Approved	December 2019 Projection
Jul-20	648,749	649,733
Aug-20	650,323	651,434
Sep-20	649,076	649,766
Oct-20	650,607	650,853
Nov-20	649,373	649,512
Dec-20	649,011	650,100
Jan-21	648,180	651,406
Feb-21	647,490	651,597
Mar-21	647,933	652,779
Apr-21	647,762	653,182
May-21	648,500	652,625
Jun-21	647,900	653,984
Jul-21		
Aug-21		
Sep-21		
Oct-21		
Nov-21		
Dec-21		
Jan-22		
Feb-22		
Mar-22		
Apr-22		
May-22		
Jun-22		

Fiscal Year Averages

Fiscal Year	Total Medicaid Recipients	Percent Change
SFY11	272,271	17.4%
SFY12	289,940	6.5%
SFY13	299,548	3.3%
SFY14	374,020	24.9%
SFY15	558,713	49.4%
SFY16	608,237	8.9%
SFY17	637,796	4.9%
SFY18	654,943	2.7%
SFY19	653,697	-0.2%
SFY20 YTD	648,388	-0.8%



Medicaid Caseloads by Category (Excluding Nevada Check Up)



Medicaid Caseloads (Excluding Nevada Check Up)

Caseload by Month

Month	Moms and Kids	Aged, Blind, and Disabled	Newly Eligible Parent-Caretakers	Childless Adults	Other	Total
Jul-17	313,032	94,195	61,351	149,239	30,696	648,513
Aug-17	314,985	94,699	61,331	149,916	30,595	651,526
Sep-17	314,495	93,779	61,210	149,760	30,758	650,002
Oct-17	315,182	95,304	61,261	150,090	30,760	652,597
Nov-17	313,693	95,412	61,439	150,192	31,020	651,756
Dec-17	313,496	95,799	61,345	151,617	31,199	653,456
Jan-18	315,037	96,301	61,694	153,100	31,488	657,620
Feb-18	315,420	96,584	61,384	152,701	31,426	657,515
Mar-18	315,682	96,850	61,263	152,506	31,450	657,751
Apr-18	316,832	97,029	61,573	152,784	31,287	659,505
May-18	316,715	97,137	61,757	152,976	31,092	659,677
Jun-18	316,653	97,376	61,421	152,518	31,419	659,387
Jul-18	317,719	97,557	61,196	152,959	31,360	660,791
Aug-18	318,995	97,777	60,974	152,724	31,518	661,988
Sep-18	317,701	98,091	60,705	152,619	31,765	660,881
Oct-18	316,421	98,367	60,778	152,845	32,066	660,477
Nov-18	313,067	98,226	60,012	151,885	32,179	655,369
Dec-18	310,467	98,158	59,731	151,018	32,138	651,512
Jan-19	309,370	98,448	59,745	150,768	32,163	650,494
Feb-19	308,093	98,616	59,288	150,372	32,271	648,640
Mar-19	307,682	98,636	59,005	150,125	32,824	648,272
Apr-19	308,378	98,724	59,238	150,751	32,539	649,630
May-19	307,724	98,871	59,149	150,419	32,464	648,627
Jun-19	307,092	99,027	59,046	150,060	32,455	647,680
Jul-19	308,196	99,433	58,988	150,737	32,437	649,791
Aug-19	308,292	99,281	58,837	150,730	32,434	649,574
Sep-19	307,858	99,631	58,611	150,863	32,365	649,328
Oct-19	306,706	99,893	58,588	151,185	32,448	648,820
Nov-19	303,129	100,187	58,091	150,302	32,718	644,427
Dec-19						
Jan-20						
Feb-20						
Mar-20						
Apr-20						
May-20						
Jun-20						

Fiscal Year Average Caseload

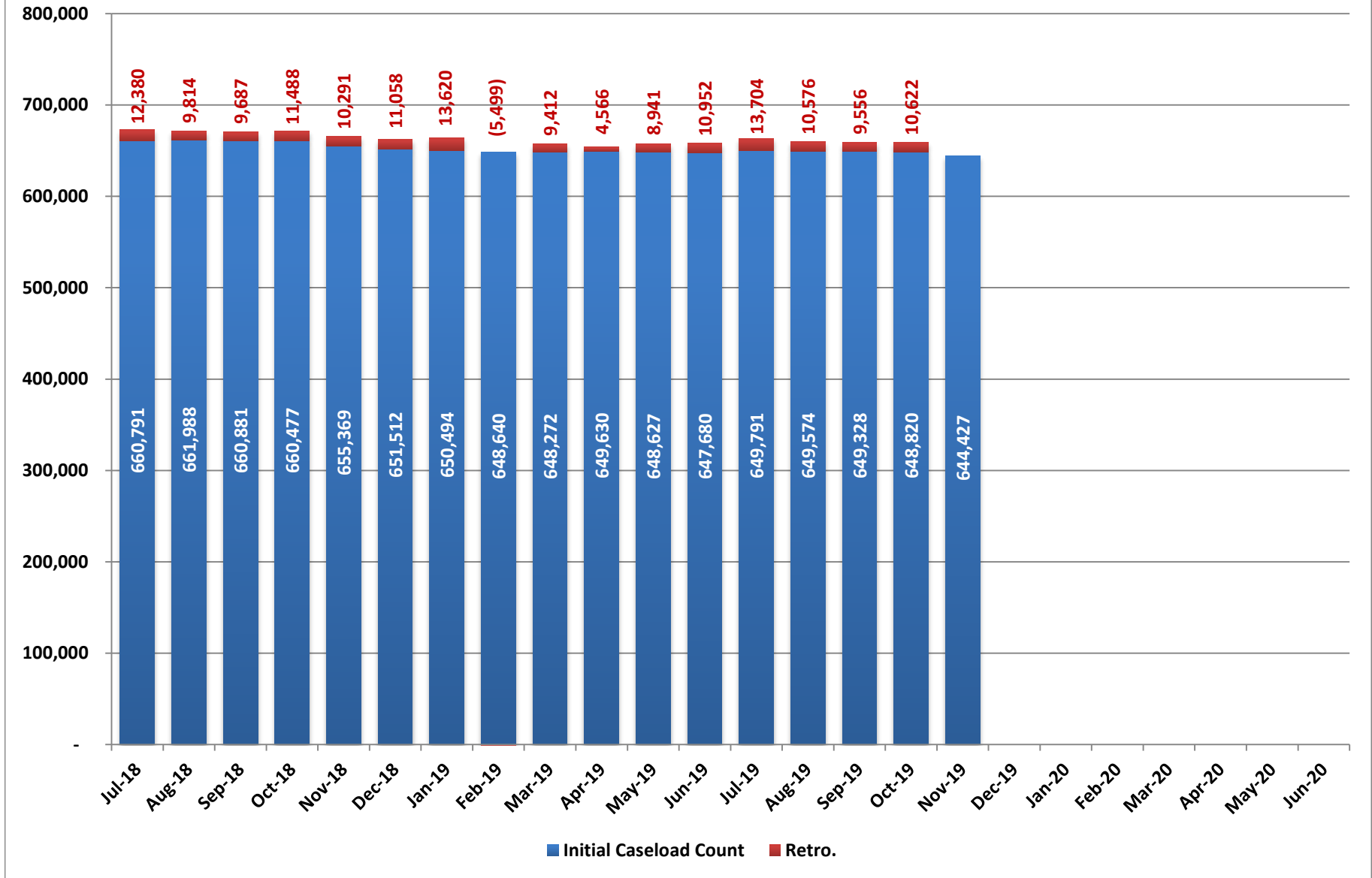
Fiscal Year	Moms and Kids	Aged, Blind, and Disabled	Newly Eligible Parent-Caretakers	Childless Adults	Other	Total
SFY15	291,013	79,931	47,528	116,729	23,526	558,726
SFY16	299,439	85,818	58,284	136,771	27,871	608,182
SFY17	308,943	91,758	60,985	146,057	30,036	637,779
SFY18	315,102	95,872	61,419	151,450	31,099	654,942
SFY19	311,892	98,375	59,906	151,379	32,145	653,697
SFY20 YTD	306,836	99,685	58,623	150,763	32,480	648,388

Month over Month Change in Caseload

Month	Moms and Kids	Aged, Blind, and Disabled	Newly Eligible Parent-Caretakers	Childless Adults	Other	Total
Jul-17	1,444	449	(31)	139	48	2,049
Aug-17	1,953	504	(20)	677	(101)	3,013
Sep-17	(490)	(920)	(121)	(156)	163	(1,524)
Oct-17	687	1,525	51	330	2	2,595
Nov-17	(1,489)	108	178	102	260	(841)
Dec-17	(197)	387	(94)	1,425	179	1,700
Jan-18	1,541	502	349	1,483	289	4,164
Feb-18	383	283	(310)	(399)	(62)	(105)
Mar-18	262	266	(121)	(195)	24	236
Apr-18	1,150	179	310	278	(163)	1,754
May-18	(117)	108	184	192	(195)	172
Jun-18	(62)	239	(336)	(458)	327	(290)
Jul-18	1,066	181	(225)	441	(59)	1,404
Aug-18	1,276	220	(222)	(235)	158	1,197
Sep-18	(1,294)	314	(269)	(105)	247	(1,107)
Oct-18	(1,280)	276	73	226	301	(404)
Nov-18	(3,354)	(141)	(766)	(960)	113	(5,108)
Dec-18	(2,600)	(68)	(281)	(867)	(41)	(3,857)
Jan-19	(1,097)	290	14	(250)	25	(1,018)
Feb-19	(1,277)	168	(457)	(396)	108	(1,854)
Mar-19	(411)	20	(283)	(247)	553	(368)
Apr-19	696	88	233	626	(285)	1,358
May-19	(654)	147	(89)	(332)	(75)	(1,003)
Jun-19	(632)	156	(103)	(359)	(9)	(947)
Jul-19	1,104	406	(58)	677	(18)	2,111
Aug-19	96	(152)	(151)	(7)	(3)	(217)
Sep-19	(434)	350	(226)	133	(69)	(246)
Oct-19	(1,152)	262	(23)	322	83	(508)
Nov-19	(3,577)	294	(497)	(883)	270	(4,393)
Dec-19						
Jan-20						
Feb-20						
Mar-20						
Apr-20						
May-20						
Jun-20						

Note: Other includes Child Welfare, County Match, Waivers, CHIP to Medicaid, and other minor caseloads.

Total Medicaid - Initial and Retroactive Caseload Counts (Excluding Nevada Check Up)



**Total Medicaid - Initial and Retroactive Caseload Counts
(Excluding Nevada Check up)**

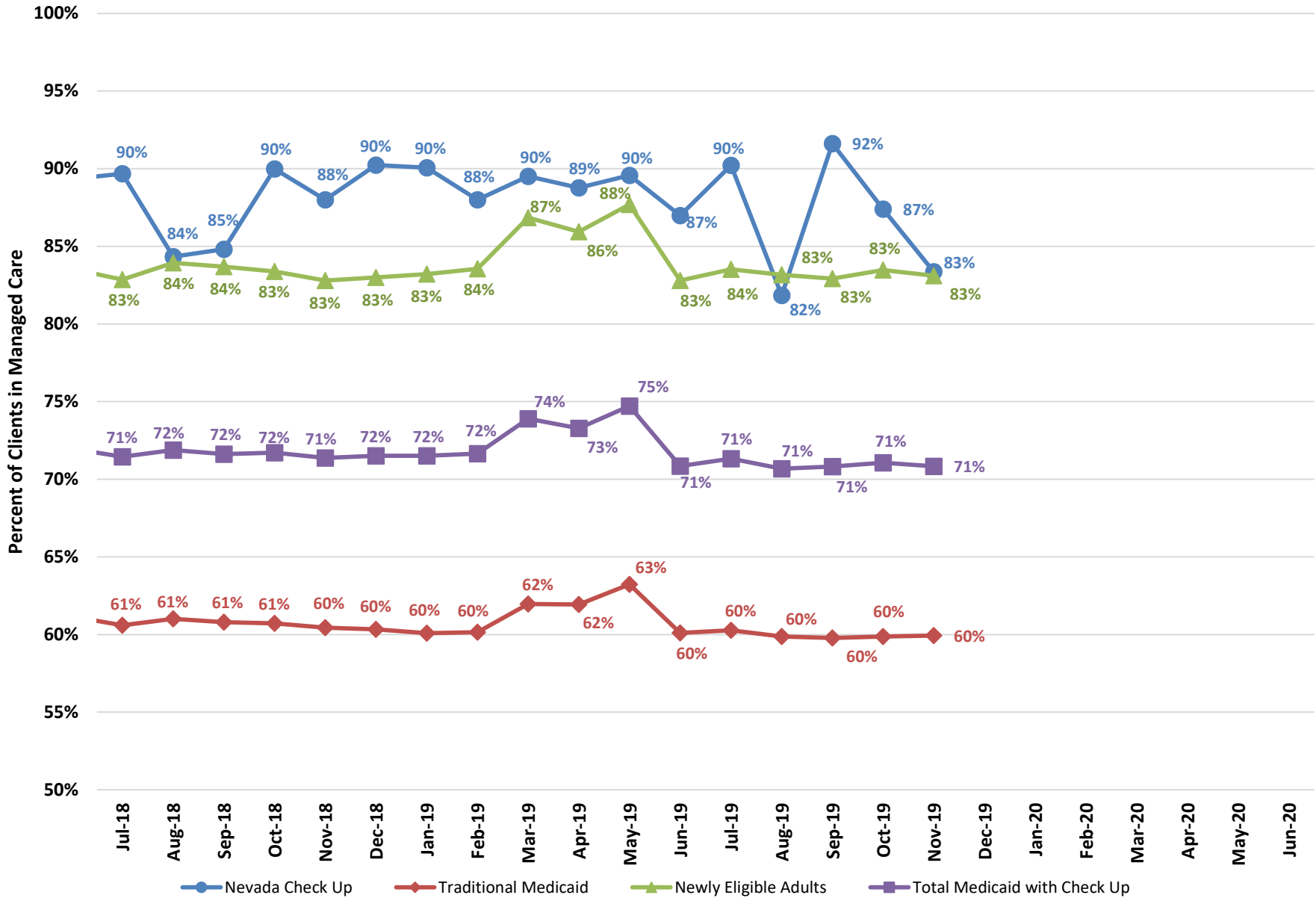
Month	FMC				Aged				Blind and Disabled				Total MAABD				Total Medicaid			
	Initial Caseload Count	Retro.	Caseload with Retro.	% Retro.	Initial Caseload Count	Retro.	Caseload with Retro.	% Retro	Initial Caseload Count	Retro.	Caseload with Retro.	% Retro	Initial Caseload Count	Retro.	Caseload with Retro.	% Retro	Initial Caseload Count	Retro.	Caseload with Retro.	% Retro
Jul-18	545,367	11,163	556,530	2.0%	13,373	114	13,487	0.8%	42,289	337	42,626	0.8%	104,109	1,060	105,169	1.0%	660,791	12,380	673,171	1.9%
Aug-18	546,202	8,742	554,944	1.6%	13,458	122	13,580	0.9%	42,318	270	42,588	0.6%	104,400	918	105,318	0.9%	661,988	9,814	671,802	1.5%
Sep-18	544,785	8,646	553,431	1.6%	13,509	96	13,605	0.7%	42,338	256	42,594	0.6%	104,719	889	105,608	0.8%	660,881	9,687	670,568	1.5%
Oct-18	543,977	10,329	554,306	1.9%	13,612	115	13,727	0.8%	42,607	301	42,908	0.7%	105,071	985	106,056	0.9%	660,477	11,488	671,965	1.7%
Nov-18	538,927	9,282	548,209	1.7%	13,618	116	13,734	0.8%	42,326	249	42,575	0.6%	104,942	848	105,790	0.8%	655,369	10,291	665,660	1.6%
Dec-18	535,062	10,217	545,279	1.9%	13,640	98	13,738	0.7%	42,108	247	42,355	0.6%	104,887	727	105,614	0.7%	651,512	11,058	662,570	1.7%
Jan-19	533,782	12,727	546,509	2.4%	13,690	72	13,762	0.5%	42,185	296	42,481	0.7%	105,151	799	105,950	0.8%	650,494	13,620	664,114	2.1%
Feb-19	531,767	-6,396	525,371	-1.2%	13,735	112	13,847	0.8%	42,139	149	42,288	0.4%	105,346	813	106,159	0.8%	648,640	-5,499	643,141	-0.8%
Mar-19	530,912	8,258	539,170	1.6%	13,811	117	13,928	0.8%	41,983	255	42,238	0.6%	105,359	1,026	106,385	1.0%	648,272	9,412	657,684	1.5%
Apr-19	532,249	3,694	535,943	0.7%	13,892	107	13,999	0.8%	41,859	178	42,037	0.4%	105,461	798	106,259	0.8%	649,630	4,566	654,196	0.7%
May-19	531,036	7,738	538,774	1.5%	13,911	135	14,046	1.0%	41,740	240	41,980	0.6%	105,646	1,074	106,720	1.0%	648,627	8,941	657,568	1.4%
Jun-19	529,914	9,874	539,788	1.9%	13,979	155	14,134	1.1%	41,660	315	41,975	0.8%	105,822	1,143	106,965	1.1%	647,680	10,952	658,632	1.7%
Jul-19	531,584	12,350	543,934	2.3%	14,030	139	14,169	1.0%	41,856	312	42,168	0.7%	106,242	1,158	107,400	1.1%	649,791	13,704	663,495	2.1%
Aug-19	531,463	9,397	540,860	1.8%	14,075	120	14,195	0.9%	41,759	261	42,020	0.6%	106,141	1,029	107,170	1.0%	649,574	10,576	660,150	1.6%
Sep-19	530,819	8,599	539,418	1.6%	14,169	108	14,277	0.8%	41,857	250	42,107	0.6%	106,502	858	107,360	0.8%	649,328	9,556	658,884	1.5%
Oct-19	530,029	9,911	539,940	1.9%	14,366	53	14,419	0.4%	41,898	220	42,118	0.5%	106,764	639	107,403	0.6%	648,820	10,622	659,442	1.6%
Nov-19	525,160				14,441				41,851				107,168				644,427			
Dec-19																				
Jan-20																				
Feb-20																				
Mar-20																				
Apr-20																				
May-20																				
Jun-20																				

Fiscal Year Averages

Fiscal Year	FMC				Aged				Blind and Disabled				Total MAABD				Total Medicaid			
	Initial Caseload Count	Retro.	Caseload with Retro.	% Retro.	Initial Caseload Count	Retro.	Caseload with Retro.	% Retro	Initial Caseload Count	Retro.	Caseload with Retro.	% Retro	Initial Caseload Count	Retro.	Caseload with Retro.	% Retro	Initial Caseload Count	Retro.	Caseload with Retro.	% Retro
SFY15	463,507	20,609	484,116	4.5%	11,623	243	11,866	2.1%	37,622	537	38,159	1.4%	85,646	1,523	87,169	1.8%	558,774	22,319	581,092	4.0%
SFY16	505,872	12,322	518,194	2.4%	12,181	173	12,355	1.4%	39,686	352	40,037	0.9%	91,761	1,159	92,920	1.3%	608,237	13,600	621,837	2.2%
SFY17	529,040	11,158	540,198	2.1%	12,699	172	12,870	1.4%	41,562	329	41,891	0.8%	97,926	993	98,919	1.0%	637,798	12,258	650,056	1.9%
SFY18	541,608	11,121	552,730	2.1%	13,062	163	13,225	1.2%	42,197	379	42,576	0.9%	102,281	1,223	103,504	1.2%	654,943	12,486	667,429	1.9%
SFY19	536,998	7,856	544,855	1.5%	13,686	113	13,799	0.8%	42,129	258	42,387	0.6%	105,076	923	105,999	0.9%	653,697	8,893	662,590	1.4%
SFY20 TYD	529,811	10,064	541,038	1.9%	14,216	105	14,265	0.7%	41,844	261	42,103	0.6%	106,563	921	107,334	0.9%	648,388	11,115	660,493	1.7%

Retro numbers were updated starting February 2019 based off the implementation of the new data warehouse system.

Percent in Managed Care by Client Type

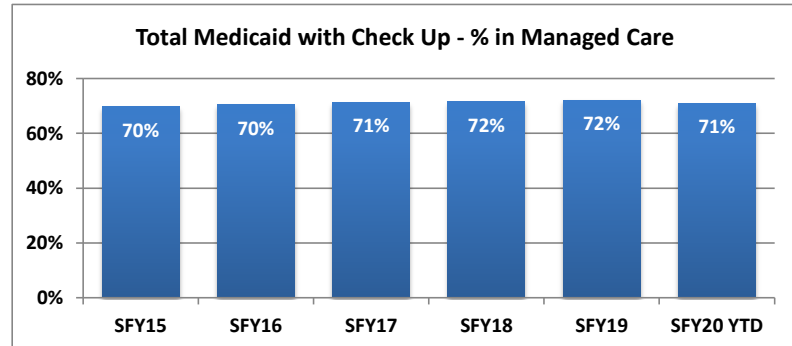


Percent of Medicaid Clients in Managed Care

Month	Nevada Check Up			Traditional Medicaid			Newly Eligible Adults			Total Medicaid with Check Up		
	Managed Care Enrollment	Total Caseload	% in Managed Care	Managed Care Enrollment	Total Caseload net of SLMB	% in Managed Care	Managed Care Enrollment	Total Caseload	% in Managed Care	Managed Care Enrollment	Total Caseload net of SLMB	% in Managed Care
Jul-18	25,170	28,066	90%	277,091	457,264	61%	177,917	214,714	83%	480,178	671,978	71%
Aug-18	24,129	28,608	84%	280,235	459,334	61%	179,828	214,260	84%	484,192	673,594	72%
Sep-18	23,769	28,027	85%	278,434	457,989	61%	178,996	213,869	84%	481,199	671,858	72%
Oct-18	25,328	28,144	90%	277,632	457,284	61%	178,585	214,196	83%	481,545	671,480	72%
Nov-18	25,466	28,937	88%	274,842	454,758	60%	175,882	212,434	83%	476,190	667,192	71%
Dec-18	26,276	29,122	90%	272,818	452,153	60%	175,351	211,278	83%	474,445	663,431	72%
Jan-19	26,921	29,890	90%	271,637	452,063	60%	175,632	211,069	83%	474,190	663,132	72%
Feb-19	26,916	30,588	88%	271,727	451,736	60%	175,640	210,227	84%	474,283	661,963	72%
Mar-19	26,721	29,854	90%	279,501	451,066	62%	182,154	209,747	87%	488,376	660,813	74%
Apr-19	24,278	27,350	89%	278,102	449,054	62%	180,985	210,608	86%	483,365	659,662	73%
May-19	24,110	26,917	90%	283,220	447,922	63%	184,306	210,158	88%	491,636	658,080	75%
Jun-19	22,986	26,425	87%	268,582	446,861	60%	173,632	209,695	83%	465,200	656,556	71%
Jul-19	23,927	26,523	90%	270,215	448,327	60%	175,715	210,386	84%	469,857	658,713	71%
Aug-19	22,305	27,255	82%	268,874	449,059	60%	174,819	210,184	83%	465,998	659,243	71%
Sep-19	23,935	26,126	92%	267,693	447,740	60%	174,206	210,093	83%	465,834	657,833	71%
Oct-19	24,059	27,526	87%	268,396	448,267	60%	175,641	210,398	83%	468,096	658,665	71%
Nov-19	22,919	27,494	83%	266,795	445,183	60%	173,682	209,002	83%	463,396	654,185	71%
Dec-19												
Jan-20												
Feb-20												
Mar-20												
Apr-20												
May-20												
Jun-20												

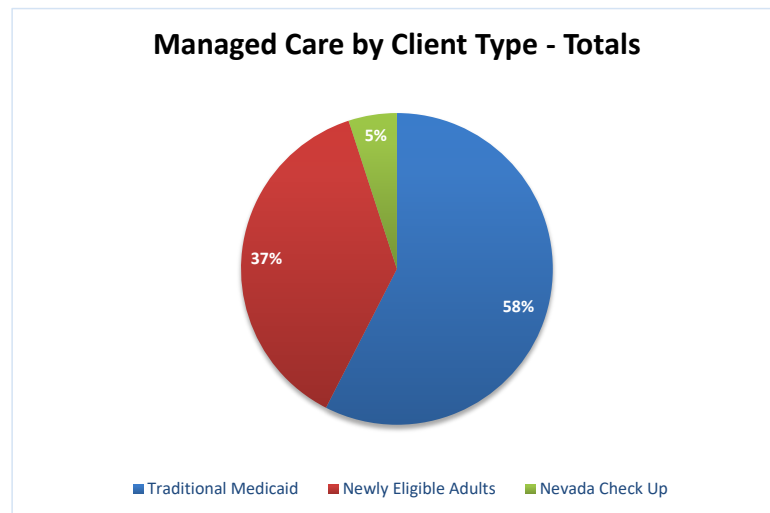
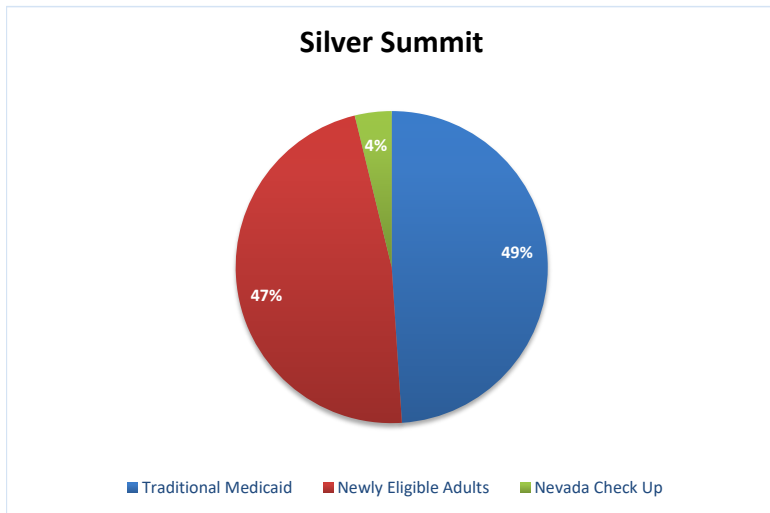
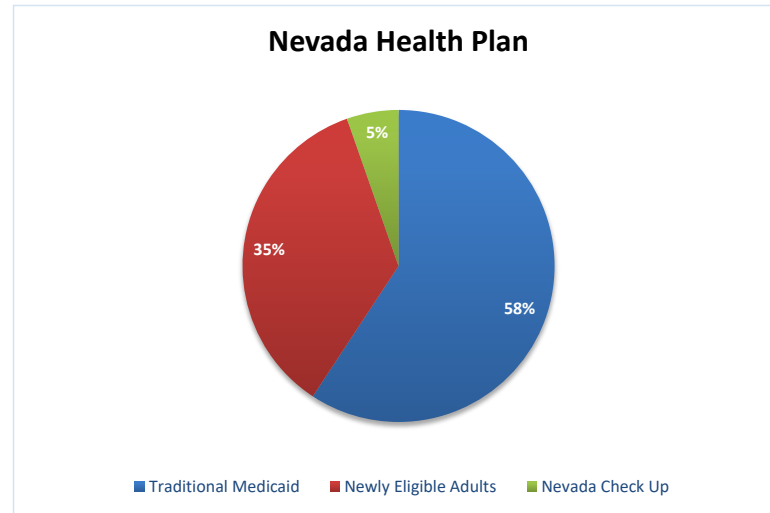
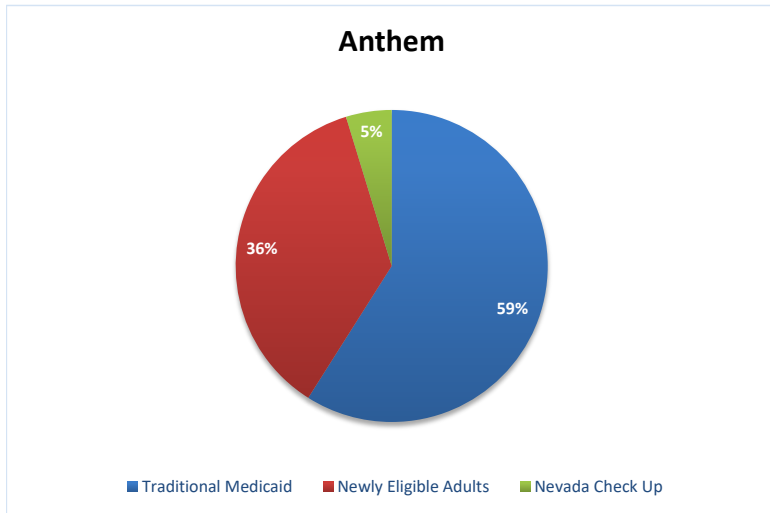
Fiscal Year Averages

	Managed Care Enrollment	% in Managed Care
SFY15	395,743	70%
SFY16	437,740	70%
SFY17	462,312	71%
SFY18	476,750	72%
SFY19	479,567	72%
SFY20 YTD	466,636	71%



Note: Traditional Medicaid totals include both cat 11 (CHIP Expansion), and cat 12 (TANF/CHAP) populations.

Managed Care by Client Type State Fiscal Year 2020 YTD



Managed Care Providers

Month	Anthem								Health Plan of Nevada								Total Managed Care Enrollment
	Traditional Medicaid	% of Traditional Medicaid	Newly Eligible Adults	% of Newly Eligible	Nevada Check Up	% of Nevada Check Up	Total for Plan	% of Total	Traditional Medicaid	% of Traditional Medicaid	Newly Eligible Adults	% of Newly Eligible	Nevada Check Up	% of Nevada Check Up	Total for Plan	% of Total	
Jul-18	106,130	38%	59,233	33%	8,784	35%	174,147	36%	146,720	53%	93,425	53%	14,373	57%	254,518	53%	480,178
Aug-18	107,663	38%	60,459	34%	8,409	35%	176,531	36%	147,917	53%	94,012	52%	13,794	57%	255,723	53%	484,192
Sep-18	107,725	39%	60,882	34%	8,360	35%	176,967	37%	146,575	53%	93,260	52%	13,546	57%	253,381	53%	481,199
Oct-18	108,023	39%	61,760	35%	9,043	36%	178,826	37%	145,598	52%	92,311	52%	14,331	57%	252,240	52%	481,545
Nov-18	107,498	39%	61,741	35%	9,134	36%	178,373	37%	143,556	52%	90,558	51%	14,425	57%	248,539	52%	476,190
Dec-18	107,138	39%	62,435	36%	9,508	36%	179,081	38%	142,095	52%	89,703	51%	14,737	56%	246,535	52%	474,445
Jan-19	107,035	39%	63,162	36%	9,862	37%	180,059	38%	141,071	52%	89,099	51%	14,924	55%	245,094	52%	474,190
Feb-19	107,049	39%	63,164	36%	9,861	37%	180,074	38%	141,145	52%	89,105	51%	14,920	55%	245,170	52%	474,283
Mar-19	110,744	40%	66,387	36%	9,785	37%	186,916	38%	144,117	52%	91,227	50%	14,742	55%	250,086	51%	488,376
Apr-19	110,644	40%	66,467	37%	8,817	36%	185,928	38%	143,253	52%	90,444	50%	13,503	56%	247,200	51%	483,365
May-19	113,139	40%	68,507	37%	8,792	36%	190,438	39%	144,981	51%	91,153	49%	13,416	56%	249,550	51%	491,636
Jun-19	107,694	40%	65,241	38%	8,507	37%	181,442	39%	137,479	51%	85,541	49%	12,636	55%	235,656	51%	465,200
Jul-19	108,592	40%	66,446	38%	8,800	37%	183,838	39%	137,841	51%	86,106	49%	13,210	55%	237,157	50%	469,857
Aug-19	108,573	40%	66,453	38%	8,247	37%	183,273	39%	136,477	51%	85,252	49%	12,316	55%	234,045	50%	465,998
Sep-19	108,406	40%	66,538	38%	8,947	37%	183,891	39%	135,494	51%	84,655	49%	13,103	55%	233,252	50%	465,834
Oct-19	109,034	41%	67,543	38%	9,026	38%	185,603	40%	135,292	50%	84,916	48%	13,107	54%	233,315	50%	468,096
Nov-19	108,699	41%	67,225	39%	8,613	38%	184,537	40%	134,025	50%	83,612	48%	12,470	54%	230,107	50%	463,396
Dec-19																	
Jan-20																	
Feb-20																	
Mar-20																	
Apr-20																	
May-20																	
Jun-20																	

Note: Traditional Medicaid totals include both cat 11 (CHIP Expansion), and cat 12 (TANF/CHAP) populations.

Fiscal Year Averages

Fiscal Year	Anthem								Health Plan of Nevada							
	Traditional Medicaid	% of Traditional Medicaid	Newly Eligible Adults	% of Newly Eligible	Nevada Check Up	% of Nevada Check Up	Total for Plan	% of Total	Traditional Medicaid	% of Traditional Medicaid	Newly Eligible Adults	% of Newly Eligible	Nevada Check Up	% of Nevada Check Up	Total for Plan	% of Total
SFY15	112,119	44%	63,560	40%	7,655	39%	183,334	42%	143,176	56%	95,741	60%	12,020	61%	250,936	58%
SFY16	114,584	44%	65,662	40%	8,222	39%	188,468	42%	148,317	56%	100,569	60%	13,030	61%	261,916	58%
SFY17	115,016	43%	67,149	39%	8,638	38%	190,802	41%	151,854	57%	104,861	61%	13,940	62%	270,655	59%
SFY18	108,089	40%	61,345	35%	8,520	36%	177,954	38%	151,193	55%	100,426	57%	14,152	59%	265,770	56%
SFY19	108,374	39%	63,287	35%	9,072	36%	180,732	38%	143,709	52%	90,820	51%	14,112	56%	248,641	52%
SFY20 YTD	108,661	40%	66,841	38%	8,727	37%	184,228	39%	135,826	51%	84,908	49%	12,841	55%	233,575	50%

Managed Care Providers (Continued)

Month	Silver Summit								Aetna								Total Managed Care Enrollment
	Traditional Medicaid	% of Traditional Medicaid	Newly Eligible Adults	% of Newly Eligible	Nevada Check Up	% of Nevada Check Up	Total for Plan	% of Total	Traditional Medicaid	% of Traditional Medicaid	Newly Eligible Adults	% of Newly Eligible	Nevada Check Up	% of Nevada Check Up	Total for Plan	% of Total	
Jul-18	24,241	9.0%	25,259	14.0%	2,013	8.0%	51,513	11.0%									480,178
Aug-18	24,655	8.8%	25,357	14.1%	1,926	8.0%	51,938	10.7%									484,192
Sep-18	24,134	8.7%	24,854	13.9%	1,863	7.8%	50,851	10.6%									481,199
Oct-18	24,011	8.6%	24,514	13.7%	1,954	7.7%	50,479	10.5%									481,545
Nov-18	23,788	8.7%	23,583	13.4%	1,907	7.5%	49,278	10.3%									476,190
Dec-18	23,585	8.6%	23,213	13.2%	2,031	7.7%	48,829	10.3%									474,445
Jan-19	23,531	9.0%	23,371	13.0%	2,135	8.0%	49,037	10.0%									474,190
Feb-19	23,533	8.7%	23,371	13.3%	2,135	7.9%	49,039	10.3%									474,283
Mar-19	24,640	8.8%	24,540	13.5%	2,194	8.2%	51,374	10.5%									488,376
Apr-19	24,205	8.7%	24,074	13.3%	1,958	8.1%	50,237	10.4%									483,365
May-19	25,100	8.9%	24,646	13.4%	1,902	7.9%	51,648	10.5%									491,636
Jun-19	23,409	8.7%	22,850	13.2%	1,843	8.0%	48,102	10.3%									465,200
Jul-19	23,782	8.8%	23,163	13.2%	1,917	8.0%	48,862	10.4%									469,857
Aug-19	23,824	8.9%	23,114	13.2%	1,742	7.8%	48,680	10.4%									465,998
Sep-19	23,793	8.9%	23,013	13.2%	1,885	7.9%	48,691	10.5%									465,834
Oct-19	24,070	9.0%	23,182	13.2%	1,926	8.0%	49,178	10.5%									468,096
Nov-19	24,071	9.0%	22,845	13.2%	1,836	8.0%	48,752	10.5%									463,396
Dec-19																	
Jan-20																	
Feb-20																	
Mar-20																	
Apr-20																	
May-20																	
Jun-20																	

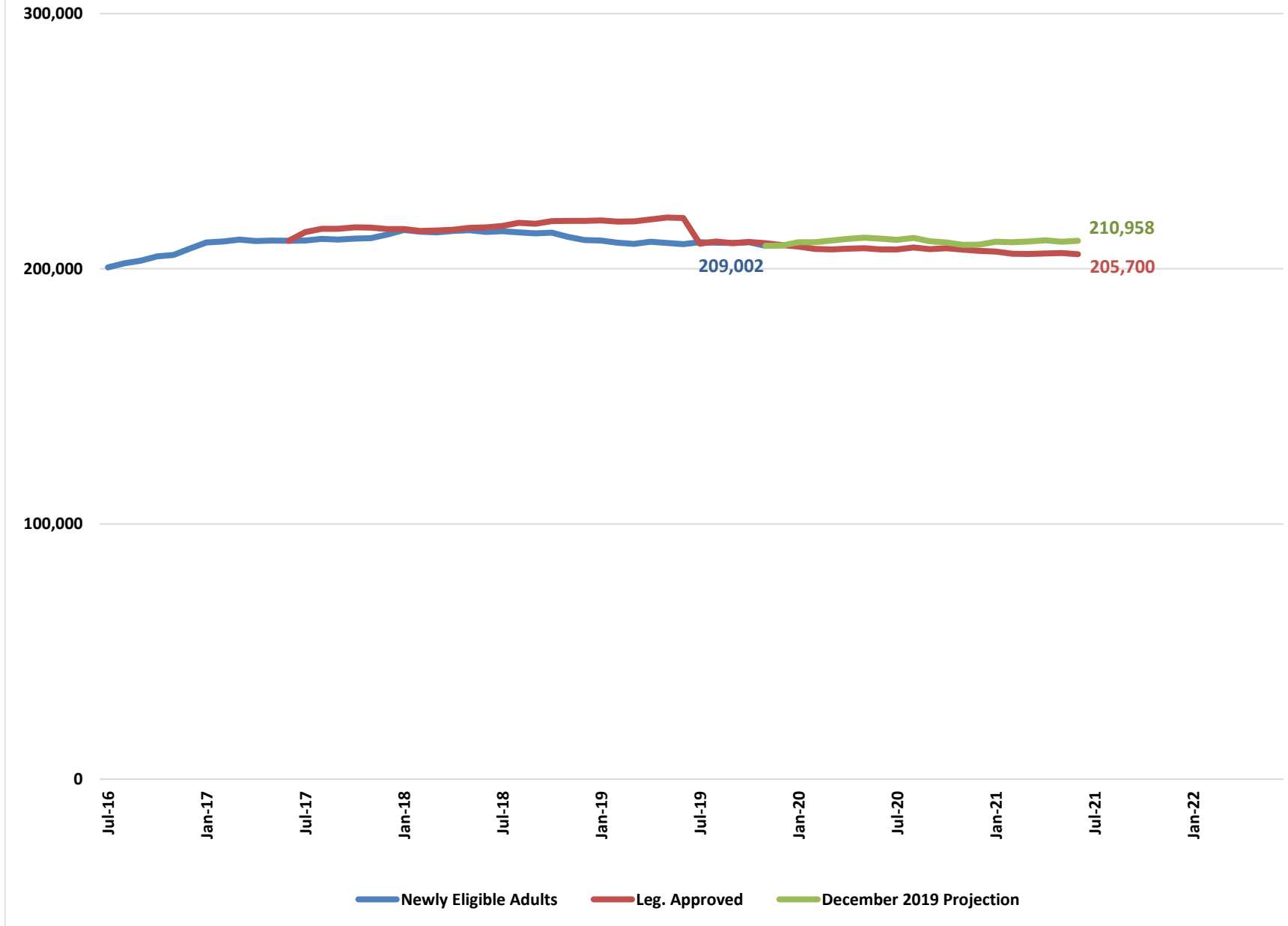
Note: Traditional Medicaid totals include both cat 11 (CHIP Expansion), and cat 12 (TANF/CHAP) populations.

Fiscal Year Averages

Fiscal Year	Silver Summit								Aetna							
	Traditional Medicaid	% of Traditional Medicaid	Newly Eligible Adults	% of Newly Eligible	Nevada Check Up	% of Nevada Check Up	Total for Plan	% of Total	Traditional Medicaid	% of Traditional Medicaid	Newly Eligible Adults	% of Newly Eligible	Nevada Check Up	% of Nevada Check Up	Total for Plan	% of Total
SFY15																
SFY16																
SFY17																
SFY18	15,493	5.0%	15,970	8.0%	1,351	5.0%	32,814	6.1%	1,210	0.4%	1,238	0.7%	90	0.4%	2,538	0.5%
SFY19	24,069	8.8%	24,136	13.5%	1,988	7.9%	50,194	10.5%	0	-	0	-	0	-	0	-
SFY20 YTD	23,908	8.9%	23,063	13.2%	1,861	7.9%	48,833	10.5%	0	-	0	-	0	-	0	-

Note: Aetna Better Health only participated in the Managed Care program for two months. Their caseloads for the two months are included in Totals

Newly Eligible Adults



Newly Eligible Adults

FY17 & FY18 Biennium

Month	Newly Eligible Adults
Jul-16	200,583
Aug-16	202,122
Sep-16	203,163
Oct-16	204,878
Nov-16	205,406
Dec-16	207,966
Jan-17	210,296
Feb-17	210,670
Mar-17	211,414
Apr-17	210,861
May-17	211,053
Jun-17	210,960
Jul-17	211,060
Aug-17	211,736
Sep-17	211,428
Oct-17	211,805
Nov-17	212,028
Dec-17	213,384
Jan-18	215,236
Feb-18	214,570
Mar-18	214,266
Apr-18	214,869
May-18	215,101
Jun-18	214,489

FY19 & FY20 Biennium

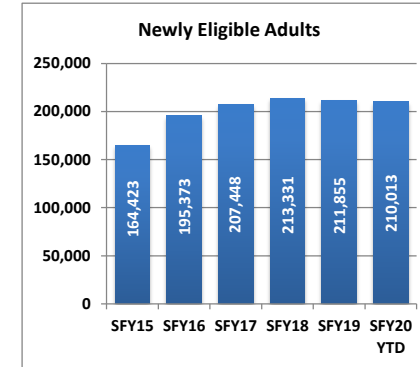
Month	Newly Eligible Adults	Leg. Approved	December 2019 Projection
Jul-18	214,714	216,778	
Aug-18	214,260	218,009	
Sep-18	213,869	217,673	
Oct-18	214,196	218,687	
Nov-18	212,434	218,810	
Dec-18	211,278	218,802	
Jan-19	211,069	218,980	
Feb-19	210,227	218,499	
Mar-19	209,747	218,614	
Apr-19	210,608	219,372	
May-19	210,158	220,076	
Jun-19	209,695	219,885	
Jul-19	210,386	209,869	
Aug-19	210,184	210,709	
Sep-19	210,093	210,017	
Oct-19	210,398	210,507	
Nov-19	209,002	210,050	209,002
Dec-19		209,299	209,127
Jan-20		208,725	210,453
Feb-20		207,744	210,389
Mar-20		207,613	211,025
Apr-20		207,836	211,734
May-20		208,067	212,234
Jun-20		207,641	211,809

FY21 & FY22 Biennium

Month	Leg. Approved	December 2019 Projection
Jul-20	207,625	211,394
Aug-20	208,343	212,063
Sep-20	207,680	210,744
Oct-20	208,023	210,320
Nov-20	207,527	209,375
Dec-20	207,004	209,491
Jan-21	206,768	210,586
Feb-21	205,916	210,368
Mar-21	205,776	210,705
Apr-21	205,986	211,202
May-21	206,146	210,566
Jun-21	205,700	210,958
Jul-21		
Aug-21		
Sep-21		
Oct-21		
Nov-21		
Dec-21		
Jan-22		
Feb-22		
Mar-22		
Apr-22		
May-22		
Jun-22		

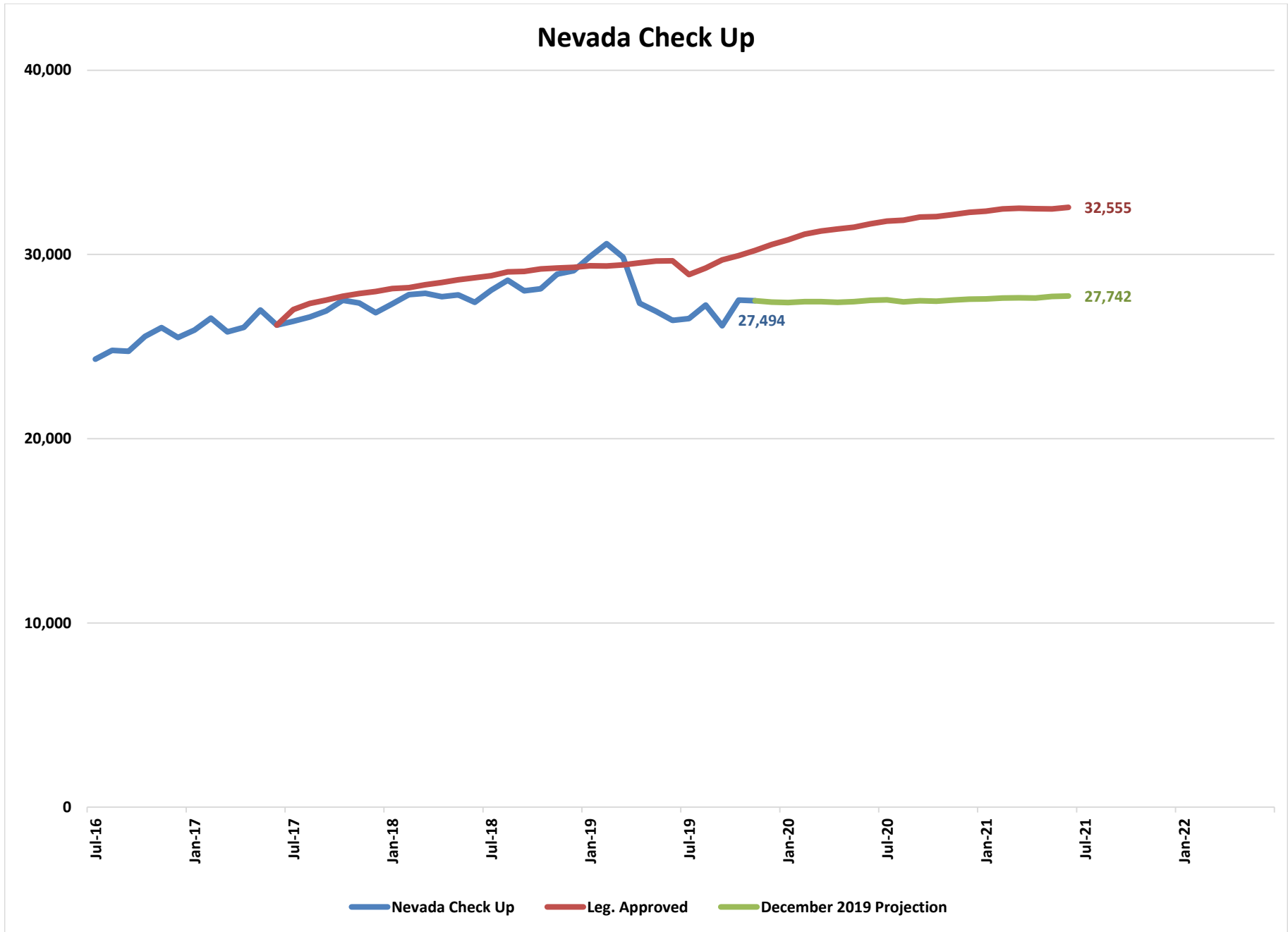
Fiscal Year Averages

Fiscal Year	Newly Eligible Adults	Percent Change
SFY15	164,423	
SFY16	195,373	18.8%
SFY17	207,448	6.2%
SFY18	213,331	2.8%
SFY19	211,855	-0.7%
SFY20 YTD	210,013	-0.9%



Note: This caseload includes childless adults age 19-64 between 0%-138% FPL and parents age 19-64 between 23%-138% FPL.

Nevada Check Up



Nevada Check Up

FY16 & FY17 Biennium

Month	Nevada Check Up
Jul-16	24,315
Aug-16	24,801
Sep-16	24,741
Oct-16	25,558
Nov-16	26,036
Dec-16	25,492
Jan-17	25,896
Feb-17	26,551
Mar-17	25,795
Apr-17	26,050
May-17	26,989
Jun-17	26,165
Jul-17	26,369
Aug-17	26,604
Sep-17	26,935
Oct-17	27,515
Nov-17	27,372
Dec-17	26,842
Jan-18	27,314
Feb-18	27,825
Mar-18	27,893
Apr-18	27,713
May-18	27,813
Jun-18	27,406

FY19 & FY20 Biennium

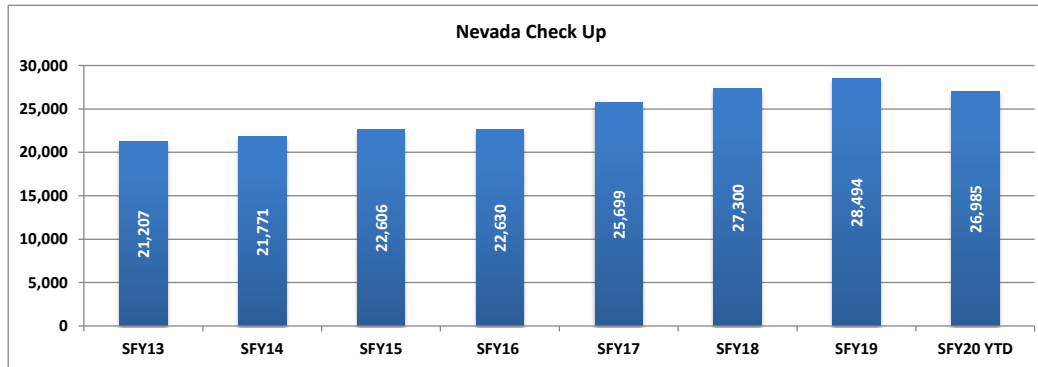
Month	Nevada Check Up	Leg. Approved	December 2019 Projection
Jul-18	28,066	28,848	
Aug-18	28,608	29,054	
Sep-18	28,027	29,076	
Oct-18	28,144	29,215	
Nov-18	28,937	29,268	
Dec-18	29,122	29,306	
Jan-19	29,890	29,387	
Feb-19	30,588	29,370	
Mar-19	29,854	29,431	
Apr-19	27,350	29,545	
May-19	26,917	29,648	
Jun-19	26,425	29,661	
Jul-19	26,523	28,907	
Aug-19	27,255	29,266	
Sep-19	26,126	29,707	
Oct-19	27,526	29,941	
Nov-19	27,494	30,220	27,494
Dec-19		30,537	27,416
Jan-20		30,793	27,396
Feb-20		31,101	27,445
Mar-20		31,277	27,435
Apr-20		31,379	27,409
May-20		31,484	27,438
Jun-20		31,670	27,518

FY21 & FY22 Biennium

Month	Leg. Approved	December 2019 Projection
Jul-20	31,808	27,534
Aug-20	31,857	27,426
Sep-20	32,027	27,493
Oct-20	32,063	27,462
Nov-20	32,164	27,527
Dec-20	32,284	27,577
Jan-21	32,352	27,587
Feb-21	32,478	27,639
Mar-21	32,506	27,649
Apr-21	32,484	27,640
May-21	32,473	27,724
Jun-21	32,555	27,742
Jul-21		
Aug-21		
Sep-21		
Oct-21		
Nov-21		
Dec-21		
Jan-22		
Feb-22		
Mar-22		
Apr-22		
May-22		
Jun-22		

Fiscal Year Averages

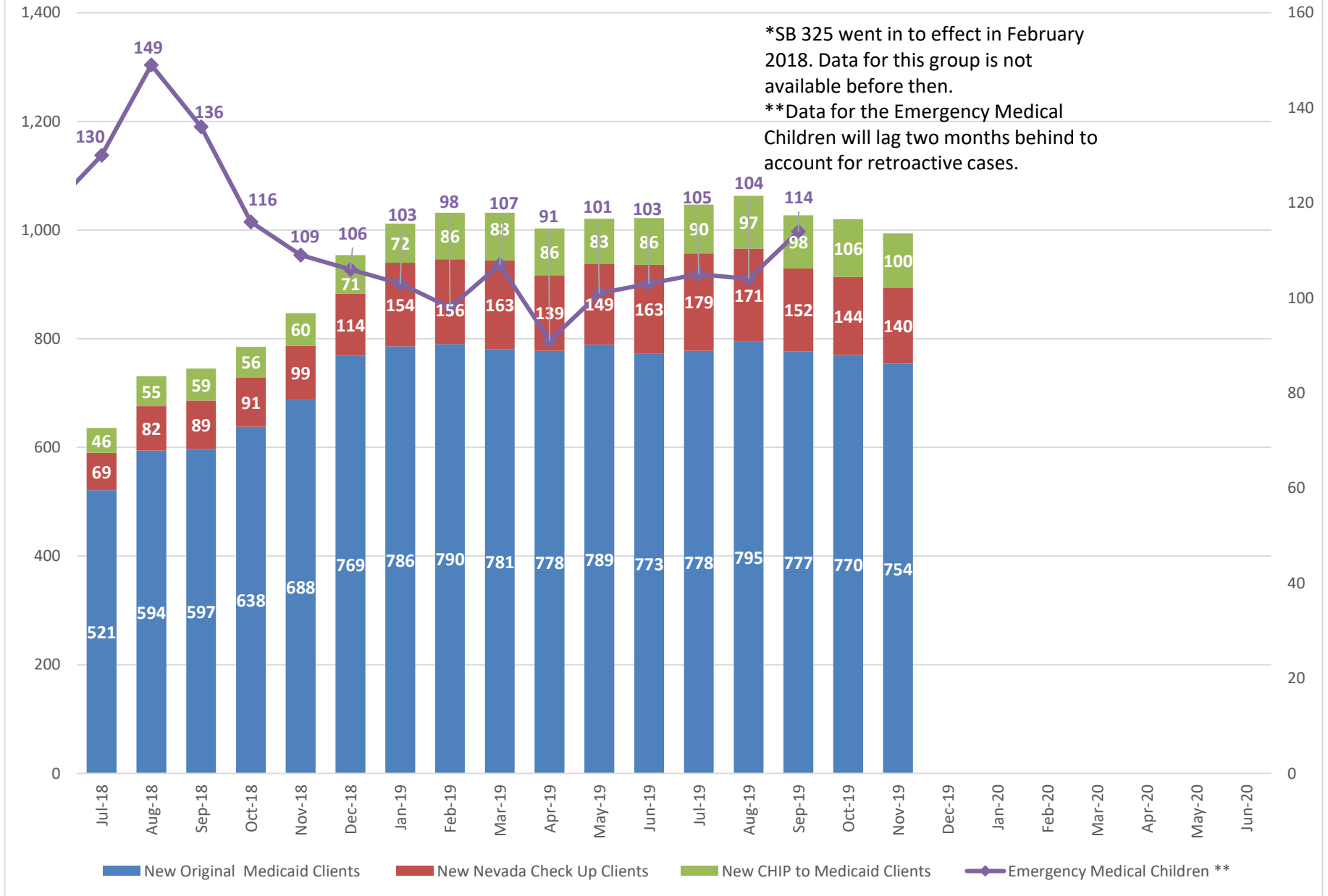
Fiscal Year	Nevada Check Up	Percent Change
SFY13	21,207	
SFY14	21,771	2.7%
SFY15	22,606	3.8%
SFY16	22,630	0.1%
SFY17	25,699	13.6%
SFY18	27,300	6.2%
SFY19	28,494	4.4%
SFY20 YTD	26,985	-5.3%



New Clients Added Under SB 325*

*SB 325 went in to effect in February 2018. Data for this group is not available before then.

**Data for the Emergency Medical Children will lag two months behind to account for retroactive cases.

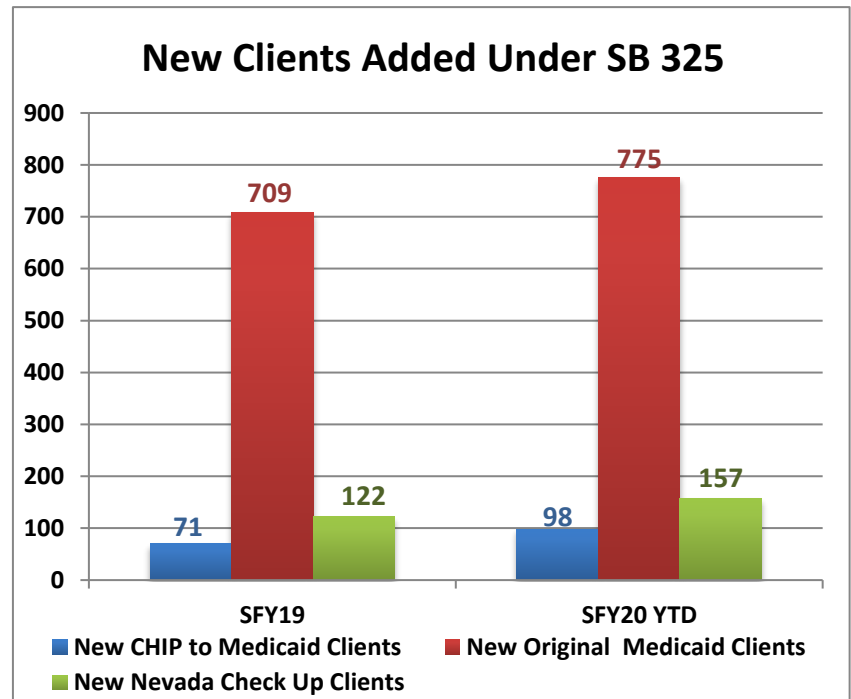


New Clients Added Under SB 325

Month	New CHIP to Medicaid Clients	New Original Medicaid Clients	New Nevada Check Up Clients	Total New Clients
Jul-18	46	521	69	636
Aug-18	55	594	82	731
Sep-18	59	597	89	745
Oct-18	56	638	91	785
Nov-18	60	688	99	847
Dec-18	71	769	114	954
Jan-19	72	786	154	1,012
Feb-19	86	790	156	1,032
Mar-19	88	781	163	1,032
Apr-19	86	778	139	1,003
May-19	83	789	149	1,021
Jun-19	86	773	163	1,022
Jul-19	90	778	179	1,047
Aug-19	97	795	171	1,063
Sep-19	98	777	152	1,027
Oct-19	106	770	144	1,020
Nov-19	100	754	140	994
Dec-19				
Jan-20				
Feb-20				
Mar-20				
Apr-20				
May-20				
Jun-20				

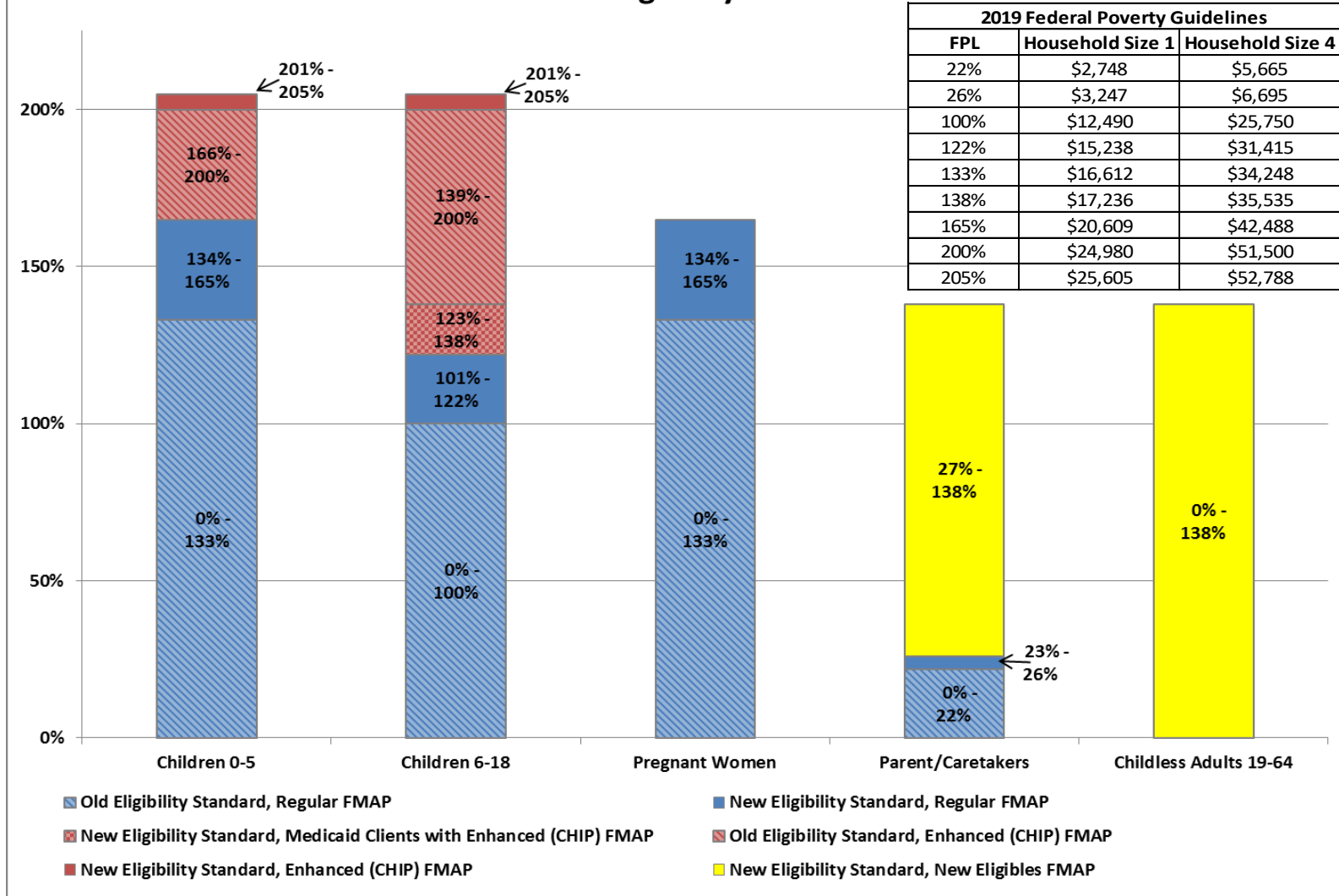
Fiscal Year Averages

Fiscal Year	New CHIP to Medicaid Clients	New Original Medicaid Clients	New Nevada Check Up Clients	Total New Clients
SFY19	71	709	122	902
SFY20 YTD	98	775	157	1,030



SB 325 allowed alien children who are younger than 18 to enroll in Medicaid programs or Nevada Check Up without the 5-year waitout period.

Medicaid Eligibility and FMAP



Federal Medical Assistance Percentages (FMAP)

State Fiscal Year	FMAP	Enhanced (CHIP) FMAP	ACA Enhanced (CHIP) FMAP	New Eligibles FMAP
SFY03	51.79%	66.25%		
	52.53%	66.77%		
SFY04	54.30%	68.01%		
	55.34%	68.74%		
SFY05	55.66%	68.96%		
SFY06	55.05%	68.53%		
SFY07	54.14%	67.90%		
SFY08	52.96%	67.07%		
SFY09	50.66%	65.46%		
	61.11%	72.78%		
SFY10	50.12%	65.08%		
	63.93%	74.75%		
SFY11	51.25%	65.87%		
	62.05%	70.44%		
SFY12	55.05%	68.54%		
SFY13	58.86%	71.20%		
SFY14	62.26%	73.58%		100.00%
SFY15	64.04%	74.83%		100.00%
SFY16	64.79%	75.35%	92.60%	100.00%
SFY17	64.74%	75.32%	98.32%	97.50%
SFY18	65.48%	75.84%	98.84%	94.50%
SFY19	65.09%	75.57%	98.57%	93.50%
SFY20	64.17%	74.92%	89.29%	91.50%
SFY21	63.74%	74.62%	77.49%	90.00%
SFY22	63.71%	74.59%		90.00%
SFY23	64.20%	74.94%		90.00%

Note: The green cells reflect a 2.95% increase for the period April 2003 through June 2004. The blue cells reflect the ARRA stimulus adjusted FMAP for October 2008 through December 2010. Blended FMAP converts federal fiscal year and calendar year FMAP rates into state fiscal years and is used for budgeting purposes only. The FMAP values for FY21 through FY23 are projections. The ACA Enhanced (CHIP) FMAP ends in September 2020.

Nevada Medicaid Population Demographics

Legacy v Expansion Population			
Month/Year	Expansion	Legacy	Total
Jul-18	228,966	465,997	694,963
Aug-18	228,436	467,739	696,175
Sep-18	228,225	466,172	694,397
Oct-18	228,749	464,991	693,740
Nov-18	228,253	462,937	691,190
Dec-18	227,854	461,119	688,973
Jan-19	226,639	460,725	687,364
Feb-19	225,617	459,281	684,898
Mar-19	224,557	458,038	682,595
Apr-19	225,358	456,300	681,658
May-19	224,576	455,356	679,932
Jun-19	224,385	454,673	679,058
Jul-19	224,753	456,315	681,068
Aug-19	224,449	456,724	681,173
Sep-19	223,905	455,407	679,312
Oct-19	223,875	454,957	678,832
Nov-19	219,720	447,988	667,708
Dec-19			
Jan-20			
Feb-20			
Mar-20			
Apr-20			
May-20			
Jun-20			

This report is a comparison between Title XIX (Medicaid population) and Title XXI (Medicaid ACA optional Medicaid expansion population) authorized by Nevada as of October 2013.

These data are pulled from the DHCFP data warehouse using the IBM Advantage Suite reporting tool. The data from the data warehouse is extracted by IBM each Friday for use by that tool.

** The total member count may not be accurate due to HIPAA disclosure restrictions*

Nevada Medicaid Population Demographics

MCO Enrollment for the Capitation Payment Run																							
Month/ Year	Medicaid						Medicaid Total	CHIP						CHIP Total	Plan Totals			Totals				Total MCO Enrollment*	
	ANT		HPN		SSH			ANT		HPN		SSH			ANT	HPN	SSH	Medicaid		Chip			
	Clark	Washoe	Clark	Washoe	Clark	Washoe		Clark	Washoe	Clark	Washoe	Clark	Washoe		ANT	HPN	SSH	Clark	Washoe	Clark	Washoe		
Jul-18	145,869	19,650	213,580	28,828	43,388	6,467	457,782	7,125	1,368	11,444	2,615	1,600	327	24,479	174,012	256,467	51,782	402,837	54,945	20,169	4,310	482,261	
Aug-18	145,784	19,579	211,721	28,424	43,188	6,312	455,008	7,368	1,416	11,687	2,686	1,673	340	25,170	174,147	254,518	51,513	400,693	54,315	20,728	4,442	480,178	
Sep-18	148,232	19,890	213,373	28,556	43,634	6,378	460,063	7,044	1,365	11,224	2,570	1,603	323	24,129	176,531	255,723	51,938	405,239	54,824	19,871	4,258	484,192	
Oct-18	148,668	19,939	211,707	28,128	42,832	6,156	457,430	7,014	1,346	10,953	2,593	1,556	307	23,769	176,967	253,381	50,851	403,207	54,223	19,523	4,246	481,199	
Nov-18	149,665	20,118	210,084	27,825	42,426	6,099	456,217	7,602	1,441	11,540	2,791	1,649	305	25,328	178,826	252,240	50,479	402,175	54,042	20,791	4,537	481,545	
Dec-18	149,285	19,954	206,816	27,298	41,409	5,962	450,724	7,664	1,470	11,627	2,798	1,602	305	25,466	178,373	248,539	49,278	397,510	53,214	20,893	4,573	476,190	
Jan-19	149,698	19,875	204,752	27,046	40,970	5,828	448,169	7,986	1,522	11,921	2,816	1,699	332	26,276	179,081	246,535	48,829	395,420	52,749	21,606	4,670	474,445	
Feb-19	150,285	19,912	203,403	26,767	41,012	5,890	447,269	8,244	1,618	12,100	2,824	1,774	361	26,921	180,059	245,094	49,037	394,700	52,569	22,118	4,803	474,190	
Mar-19	152,714	20,414	204,428	26,966	41,610	6,046	452,178	8,091	1,564	11,760	2,802	1,792	377	26,386	182,783	245,956	49,825	398,752	53,426	21,643	4,743	478,564	
Apr-19	150,380	20,021	199,758	26,270	40,439	5,778	442,646	7,142	1,412	10,637	2,498	1,570	322	23,581	178,955	239,163	48,109	390,577	52,069	19,349	4,232	466,227	
May-19	150,787	20,143	197,933	26,117	40,292	5,798	441,070	7,053	1,365	10,397	2,478	1,486	315	23,094	179,348	236,925	47,891	389,012	52,058	18,936	4,158	464,164	
Jun-19	152,782	20,535	199,198	26,201	41,200	5,896	445,812	7,052	1,343	10,191	2,421	1,548	333	22,888	181,712	238,011	48,977	393,180	52,632	18,791	4,097	468,700	
Jul-19	151,851	20,741	196,930	25,661	40,588	5,561	441,332	7,132	1,376	10,176	2,462	1,530	313	22,989	181,100	235,229	47,992	389,369	51,963	18,838	4,151	464,321	
Aug-19	153,750	20,911	197,870	25,686	41,194	5,645	445,056	7,340	1,460	10,663	2,548	1,597	320	23,928	183,461	236,767	48,756	392,814	52,242	19,600	4,328	468,984	
Sep-19	153,819	20,842	195,870	25,450	41,239	5,578	442,798	6,888	1,359	9,977	2,340	1,441	301	22,306	182,908	233,637	48,559	390,928	51,870	18,306	4,000	465,104	
Oct-19	153,836	20,731	194,416	25,307	41,151	5,553	440,994	7,484	1,463	10,645	2,461	1,566	320	23,939	183,514	232,829	48,590	389,403	51,591	19,695	4,244	464,933	
Nov-19	155,130	21,083	194,438	25,410	41,527	5,613	443,201	7,528	1,500	10,629	2,479	1,597	330	24,063	185,241	232,956	49,067	391,095	52,106	19,754	4,309	467,264	
Dec-19																							
Jan-20																							
Feb-20																							
Mar-20																							
Apr-20																							
May-20																							
Jun-20																							

* The total member count may not be accurate due to HIPAA disclosure restrictions

Nevada Medicaid Population Demographics

MCO Enrollment Assignments *																					
Month/Year	History			Random			Prior Enrollee Choice			Family			New App Choice			60-Day Rule			Ratio of Random Assignmt		
	ANT	HPN	SSH	ANT	HPN	SSH	ANT	HPN	SSH	ANT	HPN	SSH	ANT	HPN	SSH	ANT	HPN	SSH	ANT	HPN	SSH
Jul-18	0	0	0	1,292	692	1,946	2,110	3,164	263	1,410	1,950	369	1,581	1,749	216	474	723	72	32.88%	17.61%	49.52%
Aug-18	0	0	0	1,322	708	1,994	2,468	3,510	215	852	1,259	264	1,872	1,962	321	476	785	102	32.85%	17.59%	49.55%
Sep-18	0	0	0	1,177	625	1,779	2,255	2,964	243	846	1,187	234	1,822	1,363	179	488	687	141	32.87%	17.45%	49.68%
Oct-18	0	0	0	1,131	607	1,709	2,312	2,787	226	796	991	222	1,866	1,263	173	630	781	182	32.81%	17.61%	49.58%
Nov-18	0	0	0	1,242	640	1,799	2,102	2,944	224	879	1,113	235	1,668	1,219	180	453	763	170	33.74%	17.39%	48.87%
Dec-18	0	0	0	1,369	729	2,058	2,211	2,739	224	794	992	256	1,587	1,111	167	532	765	176	32.94%	17.54%	49.52%
Jan-19	0	0	0	1,543	815	2,321	2,029	2,627	251	918	1,050	305	2,109	1,720	210	607	867	236	32.98%	17.42%	49.60%
Feb-19	0	0	0	1,292	649	1,895	1,411	2,153	214	1,593	1,956	509	3,884	4,135	392	1,330	1,435	672	33.68%	16.92%	49.40%
Mar-19	0	0	0	1,142	568	1,639	1,476	2,092	218	1,479	1,775	400	4,451	4,625	543	1,140	1,427	513	34.10%	16.96%	48.94%
Apr-19	0	0	0	1,114	566	1,719	2,438	3,658	338	1,969	2,444	588	4,683	4,591	494	2,292	2,823	986	32.77%	16.65%	50.57%
May-19	0	0	0	1,128	526	1,645	1,342	1,936	164	1,173	1,659	324	4,493	4,367	541	1,066	1,182	455	34.19%	15.94%	49.86%
Jun-19	0	0	0	1,052	532	1,605	1,343	1,933	201	972	1,253	299	4,830	4,556	493	856	1,045	362	32.99%	16.68%	50.33%
Jul-19	0	0	0	1,127	559	1,642	2,130	3,026	287	1,039	1,294	335	4,998	4,910	575	1,379	1,857	653	33.86%	16.80%	49.34%
Aug-19	0	0	0	1,225	647	1,891	1,600	2,203	235	1,202	1,357	310	5,445	5,189	599	1,082	1,287	416	32.55%	17.19%	50.25%
Sep-19	0	0	0	975	506	1,480	1,859	2,842	312	854	1,130	253	4,349	4,064	541	1,255	1,561	562	32.93%	17.09%	49.98%
Oct-19	0	0	0	1,078	515	1,663	2,333	3,147	339	1,063	1,254	311	4,932	4,432	614	1,629	1,843	688	33.11%	15.82%	51.07%
Nov-19	0	0	0	970	472	1,462	1,629	2,228	242	1,100	1,439	369	4,224	3,985	543	1,111	1,520	591	33.40%	16.25%	50.34%
Dec-19																					
Jan-20																					
Feb-20																					
Mar-20																					
Apr-20																					
May-20																					
Jun-20																					

* The total member count may not be accurate due to HIPAA disclosure restrictions

Nevada Medicaid Population Demographics

MCO Plan Shares																
Month/Year	Program Shares of MCO Enrollment*				Total	Plan Shares of MCO Enrollment*						Total	Plan Shares of MCO Enrollment*			Total
	Medicaid		Chip			ANT		HPN		SSH			ANT	HPN	SSH	
	Clark	Washoe	Clark	Washoe		Clark	Washoe	Clark	Washoe	Clark	Washoe					
Jul-18	0.00%	69.18%	25.39%	5.43%	100.00%	192.63%	26.46%	283.32%	39.59%	56.64%	8.55%	607.20%	219.09%	322.91%	65.20%	607.20%
Aug-18	83.45%	11.31%	4.32%	0.93%	100.00%	31.89%	4.37%	46.53%	6.48%	9.34%	1.39%	100.00%	36.27%	53.00%	10.73%	100.00%
Sep-18	83.69%	11.32%	4.10%	0.88%	100.00%	32.07%	4.39%	46.39%	6.43%	9.34%	1.38%	100.00%	36.46%	52.81%	10.73%	100.00%
Oct-18	83.79%	11.27%	4.06%	0.88%	100.00%	32.35%	4.42%	46.27%	6.38%	9.22%	1.34%	100.00%	36.78%	52.66%	10.57%	100.00%
Nov-18	83.52%	11.22%	4.32%	0.94%	100.00%	32.66%	4.48%	46.02%	6.36%	9.15%	1.33%	100.00%	37.14%	52.38%	10.48%	100.00%
Dec-18	83.48%	11.17%	4.39%	0.96%	100.00%	32.96%	4.50%	45.87%	6.32%	9.03%	1.32%	100.00%	37.46%	52.19%	10.35%	100.00%
Jan-19	83.34%	11.12%	4.55%	0.98%	100.00%	33.24%	4.51%	45.67%	6.29%	8.99%	1.30%	100.00%	37.75%	51.96%	10.29%	100.00%
Feb-19	83.24%	11.09%	4.66%	1.01%	100.00%	33.43%	4.54%	45.45%	6.24%	9.02%	1.32%	100.00%	37.97%	51.69%	10.34%	100.00%
Mar-19	83.32%	11.16%	4.52%	0.99%	100.00%	33.60%	4.59%	45.17%	6.22%	9.07%	1.34%	100.00%	38.19%	51.39%	10.41%	100.00%
Apr-19	83.77%	11.17%	4.15%	0.91%	100.00%	33.79%	4.60%	45.13%	6.17%	9.01%	1.31%	100.00%	38.38%	51.30%	10.32%	100.00%
May-19	83.81%	11.22%	4.08%	0.90%	100.00%	34.01%	4.63%	44.88%	6.16%	9.00%	1.32%	100.00%	38.64%	51.04%	10.32%	100.00%
Jun-19	83.89%	11.23%	4.01%	0.87%	100.00%	34.10%	4.67%	44.67%	6.11%	9.12%	1.33%	100.00%	38.77%	50.78%	10.45%	100.00%
Jul-19	83.86%	11.19%	4.06%	0.89%	100.00%	34.24%	4.76%	44.60%	6.06%	9.07%	1.27%	100.00%	39.00%	50.66%	10.34%	100.00%
Aug-19	83.76%	11.14%	4.18%	0.92%	100.00%	34.35%	4.77%	44.46%	6.02%	9.12%	1.27%	100.00%	39.12%	50.49%	10.40%	100.00%
Sep-19	84.05%	11.15%	3.94%	0.86%	100.00%	34.55%	4.77%	44.26%	5.98%	9.18%	1.26%	100.00%	39.33%	50.23%	10.44%	100.00%
Oct-19	83.75%	11.10%	4.24%	0.91%	100.00%	34.70%	4.77%	44.11%	5.97%	9.19%	1.26%	100.00%	39.47%	50.08%	10.45%	100.00%
Nov-19	83.70%	11.15%	4.23%	0.92%	100.00%	34.81%	4.83%	43.89%	5.97%	9.23%	1.27%	100.00%	39.64%	49.86%	10.50%	100.00%
Dec-19																
Jan-20																
Feb-20																
Mar-20																
Apr-20																
May-20																
Jun-20																

* The total member count may not be accurate due to HIPAA disclosure restrictions

Nevada Medicaid Population Demographics

Dual Eligibles by County * November 2019							
County	FFS			MCO			TOTAL
	Medicaid		CHIP	Medicaid		CHIP	
	Non-Dual	Dual	Non-Dual	Non-Dual	Dual	Non-Dual	
CARSON CITY	9,576	1,805	785	276		13	12,455
CHURCHILL	4,384	730	236	160		3	5,513
CLARK	49,072	53,790	325	402,345	42	19,920	525,494
DOUGLAS	3,952	652	258	128		13	5,003
ELKO	7,431	809	336	91		1	8,668
ESMERALDA	73	27		26		3	129
EUREKA	167	45	8	3			223
HUMBOLDT	2,632	385	157	35			3,209
LANDER	738	142	37	10		1	928
LINCOLN	650	136	54	89		5	934
LYON	8,847	1,399	528	218		10	11,002
MINERAL	975	238	48	16			1,277
NYE	10,919	1,869	324	366		14	13,492
PERSHING	805	146	29	12		3	995
STOREY	149	32		48		6	235
WASHOE	8,882	9,799	152	53,272	9	4,327	76,441
WHITE PINE	1,398	184	43	32			1,657
TOTAL	110,650	72,188	3,320	457,127	51	24,319	667,655

* The total member count may not be accurate due to HIPAA disclosure restrictions

Nevada Medicaid Population Demographics

Aged, Blind, Disabled by County * November 2019				
County	Medicaid		CHIP	TOTAL
	ABD	Non-ABD	Non-ABD	
CARSON CITY	2,420	9,237	798	12,455
CHURCHILL	1,027	4,247	239	5,513
CLARK	80,324	424,925	20,245	525,494
DOUGLAS	884	3,848	271	5,003
ELKO	1,116	7,215	337	8,668
ESMERALDA	30	96	3	129
EUREKA	55	160	8	223
HUMBOLDT	547	2,505	157	3,209
LANDER	195	695	38	928
LINCOLN	171	704	59	934
LYON	1,999	8,465	538	11,002
MINERAL	313	916	48	1,277
NYE	2,612	10,542	338	13,492
PERSHING	194	769	32	995
STOREY	37	192	6	235
WASHOE	13,761	58,201	4,479	76,441
WHITE PINE	290	1,324	43	1,657
TOTAL	105,975	534,041	27,639	667,655
% of TOTAL	15.9%	80.0%	4.1%	100.0%

** The total member count may not be accurate due to HIPAA disclosure restrictions*